

Chronicles

News and Information for all onboard events



SUNDAY, 20 APRIL 2025

HAMBURG, GERMANY

Arrival: 8:00 a.m.

Overnight Stay

DRESS CODE: ELEGANT CASUAL

For Ladies: may opt for trousers, blouses, skirts, or casual dresses.
For Gentlemen: can wear open-collar shirts and slacks. A jacket is optional. No jeans, shorts or flip flop type footwear after 6:00 P.M. in indoor venues.

TODAY'S WEATHER

Cloudy

High: 60°F 16°C

Low: 40°F 5°C



HAMBURG, GERMANY

Aboard Silver Dawn

PLAN AHEAD

Upcoming ports



DATE	PORT	ARRIVE	DEPART
21 April	Hamburg	-	6:00 p.m.
22 April	Day at sea	-	-
23 April	Copenhagen	8:00 a.m.	-

YOUR EXPERIENCES ASHORE

SHORE EXCURSION SUGGESTIONS

Enhance your voyage with our exceptional excursions. From day excursions or private arrangements, we offer you the world. Please visit the Shore Concierge Desk to discuss your options and reserve your excursions. If you prefer, you may request your excursions via MyCruise on you in-suite TV or by completing the Excursion Booking Form in your suite. Your butler will be pleased to deliver this if completed by our deadline.

HAM-005 / Lübeck & Marzipan

6.50 Hours | \$169

Luebeck's proud old patrician houses and redbrick churches are now included on the UNESCO World Cultural Heritage list. "Queen of the Hanseatic League", the Free Imperial and Hanseatic City of Luebeck is steeped in history and tradition. Luebeck is a city, which is simply beautiful. The old town on its oval island is one of the most impressive intact examples of medieval Gothic architecture.

DECK 5 EXT. 551
OPENING HOURS:
7:30 A.M. - 10:30 P.M. | 4:00 P.M. - 7:00 P.M.



HAMBURG, GERMANY

Hamburger's City

If you thought the hamburger was an American invention, it's time to give credit where credit is due, because the hamburger comes from... Hamburg. If your jaw drops because you've only just seen the report, well done and read on. If not, do the same: read on.

First of all, it's worth noting that in Germany it's common practice to refer to a culinary speciality by its city of origin, as if it were a citizen of that city. For example, a Frankfurter sausage will be called 'Frankfurter', just as a Frankfurter would be called 'Frankfurter'. The same goes for a Berliner, but not the one that John Fitzgerald Kennedy referred to in his 1963 speech in Berlin, rather a doughnut with jam filling.

But back to our burgers...

In Hamburg, the Hamburgers (the city's inhabitants) used to serve a hearty dish to the workers: the Hamburg steak, a patty of minced meat covered in sauce, otherwise known as a Hamburger. This Hamburger was a classic in German canteens and, in the 19th century, one of the main dishes served on board the HAPAG, the shipping line that linked Hamburg to New York. With all the successive waves of migration from old Europe to America, the Hamburger gained a foothold in the New World. With the addition of two slices of bread, it became even more practical and, in less than a century, became the most American of specialities and a national icon that has since conquered taste buds the world over.

SIGHTS

- Chilehaus
- Deichstrasse
- Historischer
- Weihnachtsmarkt
- Miniatur Wunderland
- Rathaus
- Reeperbahn
- St. Michaelis Kirche

SHOPPING AND CUISINE

Hamburg's inner city is diverse. From boutiques on Gänsemarkt to passages around the Hanseviertel and luxury shopping on Neuer Wall, everyone will find something. Most traditional shopping street boasts luxury outlets and high street fashion alike, from Jungfernstieg to the Neuer Wall. For more classic Hamburg retail, just near Jungfernstieg, you will discover a row of merchants' houses that have been in business here since the 1920s.

The humble Fischbrötchen (fish roll) is one of Hamburg's most popular snacks. Made using pickled or soured herring, they are typically served in a crusty roll with pickles, onions, and remoulade sauce. These moreish morsels are a pride of Hamburg, so be sure to pick one up.

YOUR GUEST MEAL IS OUR TREAT

Enhance your dining experience with our exclusive offer at La Dame and Kaiseki. Enjoy a memorable meal with your guest on us. Savor exceptional cuisine and impeccable service, making your evening truly special. Take advantage of this 2-for-1 offer today for the 20th April and only for reservation on that day. A dining fee per person applies



TANZANITE

RARE AFRICAN GEM

THE BOUTIQUE
DECK 8

Tanzanite is an extraordinary gemstone, its appearance is influenced greatly by its ability to show hue's of blue and violet when viewed from different directions. The gemstone was discovered near the city of Arusha and Mount Kilimanjaro.

Visit our windows gallery and discover our Hubert Jewelry Tanzanite collection.



Hubert

DELUXE WINE SET

A TASTING ADVENTURE WELL BEYOND WORDS

Unleash your inner wine enthusiast and embark on a sensory journey like no other with our exclusive selection of three premium wines from our Connoisseurs Wine list. Let our Head Sommelier be your guide as you explore the nuances and flavors of these exceptional wines.

For more information on our Connoisseurs Wine Packages, reach out to our Head Sommelier.



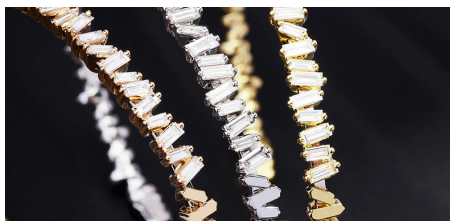
SUZANNE KALAN

FINE JEWELRY WITH A MODERN TWIST

THE BOUTIQUE
DECK 8

Discover the must-have fine jewelry collection from Suzanne Kalan, internationally recognized for its modern elegance.

For 35 years, Suzanne has infused her personal touch into each piece, featuring handpicked semiprecious gemstones like topaz, amethyst, and quartz, expertly paired with diamonds. Don't miss the chance to browse these unique creations and add a modern twist to your jewelry collection.



BOOGIE FEVER

TONIGHT'S SHOW

AT 9:15 PM
PANORAMA LOUNGE, DECK 9

Get on your boogie shoes and feel the heat in your feet as you join your Silversea Singers and Dancers with the Silversea Band for some disco fever and explosive dance moves, bound to get your toes tapping and heads bobbing.



GRAND SOUTH AMERICA 2027

Indulge your wanderlust on a sensational 75-day voyage onboard Silver Nova, for a luxurious circumnavigation of South America – designed for deep exploration of this vibrant continent. Discover curated destinations, from iconic Rio de Janeiro during Carnival, Buenos Aires, and Valparaíso, to hidden gems such as the Chilean Fjords and Manaus. Enjoy extended overnights in marquee cities, allowing for immersive experiences in Rio, Lima, and Buenos Aires. Highlights include a journey along the Amazon River, a Panama Canal transit, and exclusive events offering deeper connection with South American culture. Experience also our bespoke S.A.L.T. (Sea and Land Taste) culinary programme, unlocking a unique look at this region, on a journey like no other.

Book onboard and receive exclusive 5% onboard savings!



For more information, please contact your Future Cruise Team Barrie and Lauren on Deck 5, or extension 60515 or 80509

ACUPUNCTURE ALTERNATIVE THERAPY

OTIVM

THE ORIGINAL ART
OF COMFORT

THE OTIVM BEAUTY SPA
DECK 6

The art of acupuncture has been around for more than 3,000 years. Enjoy the benefits of this ancient art in sessions that focus on balancing your body's needs and energising mind, body, and soul.

PHONE ETIQUETTE ONBOARD



As a courtesy to your fellow guests, we kindly ask you to refrain from using the speaker function on your cell phone in any public area or public venue onboard.



ALL DAY DINING

BREAKFAST

ATLANTIDE (DECK 4)

À la Carte 8:00 a.m. – Last Seating 9:30 a.m.

LA TERRAZZA (DECK 7)

Buffet 7:00 a.m. – 10:00 a.m.

LUNCH

ATLANTIDE (DECK 4)

À la Carte 12:00 p.m. – Last Seating 1:30 p.m.

KAISEKI (DECK 4)

À la Carte 12:00 p.m. – Last Seating 2:30 p.m.

LA TERRAZZA (DECK 7)

Buffet 12:00 p.m. – 2:00 p.m.

THE GRILL (DECK 10) *

À la Carte 12:00 p.m. – Last Seating 3:30 p.m.

OPEN ALL DAY

ARTS CAFÉ (DECK 8)

Light Snacks 6:30 a.m. – 11:00 p.m.

SPACCANAPOLI (DECK 11)

À la Carte 11:00 a.m. – 11:00 p.m.

* Weather permitting

** Reservations required

DINNER

As a courtesy to your fellow guests please respect the times of your dinner reservation.

ATLANTIDE (DECK 4)

À la Carte 6:00 p.m. – Last Seating 8:30 p.m.

S.A.L.T. Kitchen (DECK 4)

À la Carte 6:30 p.m. – Last Seating 9:00 p.m.

KAISEKI (DECK 4) **

À la Carte 6:30 p.m. – Last Seating 9:00 p.m.

A dining fee per person applies

LA TERRAZZA (DECK 7) **

À la Carte 6:30 p.m. – Last Seating 9:00 p.m.

SILVER NOTE (DECK 7) **

À la Carte 7:30 p.m. – Last Seating 10:00 p.m.

THE GRILL (DECK 10) */**

À la Carte 6:30 p.m. – Last Seating 9:00 p.m.

LA DAME (DECK 8) **

À la Carte 6:30 p.m. – Last Seating 9:00 p.m.

Gentlemen: Jacket required

A dining fee per person applies

Should you wish to cancel your reservation at La Dame, please note that you must do so by latest 2:00pm on the day of the reservation, otherwise the full cover fee per person will be billed to your Guest Account.

BAR HOURS

9:00am – 10:30pm Pool Bar * [Deck 10]

10:00am – until late Panorama Lounge [Deck 9]

11:00am – until late Dolce Vita [Deck 5]

6:00pm – until late S.A.L.T. Bar [Deck 4]

6:30am – until late Arts Café [Deck 8]

6:00pm – 11:00pm Observation Library [Deck 11]

7:00pm – until late Silver Note [Deck 7]

9:00pm – until late Connoisseur's Corner [Deck 9]

*Weather permitting

IN-SUITE DINING

24-hour

The menu is available on the TV.

To place your order please contact your butler or call extension 500. In-Suite Dining is also available in other public areas when our dining venues are not open for service.

At Silversea Cruises, we take maximum food precautionary measures to ensure the safest quality product is offered to our guests; Worldwide Public Health Services advise that consuming raw or undercooked meats, seafood, shellfish, eggs, milk, or poultry may increase your risk of food-borne illness, especially if you have certain medical conditions.

HAND WASHING & HAND SANITIZING

Keeping hands clean through improved hand hygiene is one of the most important steps we can take to avoid getting sick and spreading germs to others. Many diseases and conditions are spread by not washing hands with soap and clean running water. Alcohol-based hand sanitizers can quickly reduce the number of germs on hands. Please use the hand sanitizers situated at the entrance door of the dining outlets and various locations around the ship.

SERVICES

OTIVM SPA | DECK 6

BEAUTY SALON AND BARBER SHOP

Dial 600 for appointments.

8:00 a.m. – 8:00 p.m.

Later appointments until 10:00 p.m. available on request.

SAUNA & STEAM ROOM | DECK 6

8:00 a.m. – 8:00 p.m.

FITNESS CENTRE | DECK 6

5:00 a.m. – 10:00 p.m.

Limited spaces available for classes.

Age restriction: over 18 to use the facilities. 16–18 allowed in with guardian.

FUTURE CRUISE SALES | DECK 5

Please dial 60515 or 80509 or consult your suite ITV to request an appointment.

8:00 a.m. – 11:00 a.m. | 4:00 p.m. – 8:00 p.m.

BOUTIQUES | DECK 8

Closed due to Customs Regulations

Window gallery pop up boutique open all day for preview and viewing.

CASINO | DECK 7

Closed due to Customs Regulations

Age restriction: over 18 to use the facilities.

SHORE CONCIERGE DESK | DECK 5

Dial 551 for assistance during daily opening hours.

7:30 a.m. – 10:30 a.m. | 4:00 p.m. – 7:00 p.m.

GUEST RELATIONS MANAGER | DECK 5

Dial 60502 for assistance.

8:00 a.m. – 12:00 p.m. | 4:00 p.m. – 8:00 p.m.

MEDICAL CENTRE | DECK 3

Dial 10333 during clinic hours.

8:00 a.m. – 9:00 a.m. | 5:00 p.m. – 6:00 p.m.

Medical assistance is also available by appointment.

Dial 555 (Reception) after hours.

Emergency service is available 24 hours a day.

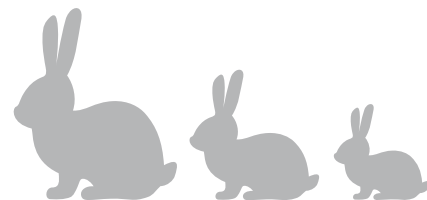
Please use the Forward elevator or Forward stairs to reach the clinic.

Kindly ask about charges prior to consultation.

IN THE EVENT OF AN EMERGENCY PLEASE DIAL 999

Sunday, 20 April 2025

Sunrise 6:08 a.m. • Sunset 8:30 p.m.



MORNING ACTIVITIES

7:00	Morning Stretch (sign up required)	Fitness Centre (6)
8:00	Silver Dawn is scheduled to dock in Hamburg, Germany and stay overnight Once the vessel has been cleared by local authorities, Cruise Director Moss will give weather and gangway location information (Clearance announcements are broadcast on the Bridge camera channel on your suite television)	
8:00	Pure Form Yoga (sign up required)	Fitness Centre (6)
9:00	Today's Silver Quiz, Crossword Puzzle and Sudoku are available (Return the Silver Quiz to Reception by 3:00 pm - prize points for the most accurate quiz that is returned earliest)	Arts Café (8)
9:00	Board games will be available for your enjoyment (unhosted)	Observation Lounge (11)
9:00	5 minute makeover	OTIVM Spa (6)
9:00	Shuffleboard will be set up for your enjoyment throughout the day (unhosted) * weather permitting	Outside Panorama Lounge (9)
9:00	Table Tennis will be available for your enjoyment (unhosted) * weather permitting	Outside Panorama Lounge (9)
9:00	Cornhole will be available to play * weather permitting	Outside Panorama Lounge (9)
9:15	Easter Interdenominational service with Father Adam	Venetian Lounge (5)
9:30	Knit and Stitch Club: meet with fellow knitters and stitchers (unhosted, no material provided)	Observation Lounge (11)
10:00	Reveal your skin secret with HD Elemis Camera	OTIVM Spa (6)
10:00	Easter Catholic Mass with Father Adam	Venetian Lounge (5)
10:45	Shuffleboard Tournament: Join your Entertainment Cruise Staff for this daytime activity * weather permitting	Outside Panorama Lounge (9)

AFTERNOON ACTIVITIES

2:00	Improve your posture with Goodfeet (complimentary consultation)	Fitness Centre (6)
2:00	S.A.L.T. Lab Class: "Fika: Scandinavian Pastries & the Ritual of the Coffee Break" (please pre-register with guest services)	S.A.L.T. Lab (4)
3:00	Table Tennis Tournament: Join your Entertainment Cruise Staff for this daytime activity * weather permitting	Outside Panorama Lounge (9)
3:30	Acupuncture walk-in clinic with Dr. Liliana Grande (complimentary consultation)	OTIVM Spa (6)
4:00	Restore Facial Contour with Dr. Marco	OTIVM Spa (6)
4:00	Bingo! with a member of the Entertainment Cruise Staff	Panorama Lounge (9)
4:45	Team Trivia - Join Cruise Director Moss for this daytime activity	Dolce Vita (5)
5:30	Golf Putting Competition: Join your Entertainment Cruise Staff for this daytime activity	Lobby (4)
5:30	Tanzanite is an extraordinary gemstone found nowhere else on Earth other than Tanzania. Visit our windows gallery and discover our Hubert Jewelry Tanzanite collection.	Boutique (8)

EVENING ACTIVITIES

DRESS CODE: ELEGANT CASUAL

6:00	Guitar Entertainer Felipe and Pianist Remon alternate performing for guests' listening pleasure	Dolce Vita (5)
6:15	Silver Dawn Band plays for your dancing and listening pleasure	Panorama Lounge (9)
6:30	Solo Travellers get together with your Gentlemen Hosts Jeff and Chris	Panorama Lounge (9)
7:30	Jazz Pianist André plays for guests' listening pleasure	Silver Note (7)
8:15	Join Silver Note Jazz Duo Esther and André as they entertain you with their live music	Silver Note (7)
9:00	Pianist Remon performs for guests' listening pleasure	Dolce Vita (5)
9:15	Showtime! Silversea Proudly Presents: Tonight's show - BOOGIE FEVER Get on your boogie shoes and feel the heat in your feet as you join your Silversea Singers and Dancers with the Silversea Band for some disco fever and explosive dance moves, bound to get your toes tapping and heads bobbing. Followed by DJ Gabor who will keep the dance party going	Panorama Lounge (9)

SHIP PROCEDURES

Remember to carry your **Suite Key Card** whenever going ashore as this is your only valid identification for reboarding the vessel.

PIER INFORMATION

Silver Dawn is docked in Altona Terminal,
Van-der-Smissen-Straße 5
22767 Hamburg, Germany

IMPORTANT NOTICE

Silversea charges in United States Dollars for all shipboard transactions. We would like you to be aware that your credit card company may charge a foreign transaction fee. Silversea processes shipboard credit card transactions through the United Kingdom. Should you wish to register a different credit card to settle your account, please see our Reception Staff on Deck 5.

CURRENCY EXCHANGE

The local currency is Euro (EUR). Guests going ashore can expect the following rates of exchange:

1 USD = 0.87 EUR approx.

1 GBP = 1.16 EUR approx.

SHIP'S AGENT

(for use in emergencies only)

PWL PORT SERVICES GMBH & CO. KG

24/7 Hotline: +494036152-441

Hamburg@pwl.de

Going ashore in Hamburg, Germany

EXCURSIONS

The excursions depart at the times listed below from the pier ashore. As a courtesy to your fellow guests and to allow the punctual departure of your excursion, we ask all participants to proceed ashore **10 minutes** prior to your departure time. If you are late, unfortunately the transportation will not wait.

Please do not forget to bring your excursion tickets and Suite Key Card.

HAM-Q	BERLIN IN A DAY BY TRAIN	8:30 a.m.
HAM-003	IN MEMORY OF ANNE FRANK - BERGEN-BELSEN CONCENTRATION CAMP	9:00 a.m.
HAM-AB	1ST DEP: HAMBURG BY LAND & LAKE	9:00 a.m.
HAM-005	LÜBECK & MARZIPAN	9:30 a.m.
HAM-010A	1ST DEP: SCENIC HAMBURG	9:30 a.m.

AFTERNOON TOURS

HAM-010B	2ND DEP: SCENIC HAMBURG	1:30 p.m.
HAM-H	MEDIEVAL LUNEBURG	1:30 p.m.
HAM-S	"BEATLES, BEER AND BRATWURST" & A PEEP INTO HAMBURG'S RED-LIGHT DISTRICT.....	4:30 p.m.

HOSPITALITY DESK ON BOARD

There will be a local Hospitality Desk Representative on board upon arrival for 2 hours this morning at the Shore Concierge Desk (Deck 5). The representative will be able to answer detailed questions and to direct guests to their desired locations. Complimentary brochures and maps may also be available.

SHUTTLE BUS

A complimentary Shuttle Bus Service will be operating between the Altona Cruise Terminal and Town Hall 9:30 a.m. until 10:00 p.m. Distance to downtown: approximately a 20-minute drive (one way). We recommend arriving at least 10 minutes prior to the shuttle bus departure at the pickup locations. Shuttle bus schedule will be posted at the Shore Concierge Desk, Deck 5 and at the gangway.

Many shops may be closed or work with shortened hours due to Ester Sunday.

GOING ASHORE INDEPENDENTLY

The Shore Concierge desk takes pride in its ability to help guests on tour as well as guests who prefer individual sightseeing. The team will make private arrangements and suggest itineraries for independent exploration. If you just want to grab a taxi or to walk ashore, the Shore Concierge is eager to supply local information and useful tips.

PLEASE NOTE THIS USEFUL INFORMATION WHEN GOING ASHORE.

SILVER DAWN SATELLITE PHONE NUMBER: +1 786 605 5750



**Overnight
Stay**