

Chronicles

News and Information for all onboard events

SATURDAY, 12 APRIL 2025

SOUTHAMPTON, ENGLAND

Arrival: 7:00 a.m.

All Aboard: 6:30 p.m.

Departure: 7:00 p.m.

DRESS CODE: ELEGANT CASUAL

Ladies: trousers, blouses, skirts, or casual dresses.

Gents: open-collar shirts and slacks, jacket optional.

No jeans, shorts or flip flop type footwear after 6:00 P.M.
in indoor venues.

TODAY'S WEATHER

Cloudy

High: 60°F 16°C

Low: 47°F 9°C



TIME CHANGE



Please turn your clocks
ONE HOUR FORWARD
during the night
between 12 and 13 April

SOUTHAMPTON, UK

Aboard Silver Dawn

PLAN AHEAD

Upcoming ports



DATE	PORT	ARRIVE	DEPART
13 April	Rouen	3:45 p.m.	-
14 April	Rouen	-	-
15 April	Rouen	-	7:15 p.m.

YOUR EXPERIENCES ASHORE

Welcome on board for your cruise from Southampton, England to Stockholm, Sweden. Important information in regards to your Shore Excursion Experience: all guests who pre-booked their excursion tickets will find them upon arrival into your Suite. To participate on any excursion, all guests must be in the possession of a valid excursion ticket. For your convenience on your excursion ticket you will find the following important information:

- Name of your excursion.
- Departure time of your excursion.
- Departure location of your excursion.
- Cancellation deadline of your excursion.

As courtesy to your fellow guests we kindly ask you to arrive 5 to 10 minutes prior to the designated departure point to allow for a punctual departure. Excursions will depart on time and guests who arrive late will unfortunately miss their tour without possibility for a refund. Please note the cancellation deadline of your excursion.

Tickets returned after this deadline are subject to 100% penalty. Thank you.

Your *Silver Dawn* Shore Concierge Team.

DECK 5 EXT. 551
OPENING HOURS:
3:00 P.M. - 7:00 P.M.



SOUTHAMPTON, UK

The departure point of the Titanic

Home of the ill-fated Titanic departure, Southampton has a long maritime history. Henry V's fleet bound for the battle of Agincourt left from here, as did the Mayflower (not from Plymouth as many believe) and the great British ocean liners, Queen Elizabeth 2 and Queen Mary both departed on their maiden voyages from the port. So suffice to say, that Southampton is a seafaring place.

Today Southampton is the cruise capital of Northern Europe, so expect a city that understands how to have fun. This comes in a variety of ways: a castellated old city that has lots of charm, some excellent museums (the most notable of which is the Sea City Museum) and extensive green spaces. Authentic Tudor remains provide a fascinating insight to 15th century living while other landmarks date back even further. A stroll around the city is generous in its attractions, so there is no better way to see Southampton than on foot.

Culture wise, the city's bustling Guildhall Square is the centre for art, education and food and drink. Southampton's location of the south coast of England means just a short distance away lie some interesting spots. Pre-historic enigma Stonehenge is less than an hour away while the quintessentially English market town Salisbury is perfect for a bit of shopping. Both are well worth a visit. For those who prefer their entertainment crafted by Mother Nature, a short ride to the New Forest will give you peace; think idyllic glades, ancient woodland, open moors, heathland and cliff top walks.

SIGHTS

- John Hansard Gallery
- Sea city Museum
- The Stage Door
- Tudor House and Garden
- Go Ape Southampton
- Royal Victoria Country Park
- City Eye
- Mayflower Studios
- Houdini's Escape Room adventure Southampton
- Harbour Lights Picturehouse
- The Mayflower Village

SHOPPING AND CUISINE

The city has the best tea rooms, cafes, shop and restaurants to suit all your foodie needs. If it's a good drink you are looking for Southampton has award-winning cocktail bars, clubs, pubs, wine bars and even speak easy bars.

The Mayflower village a pub located next to The Mayflower Theatre serving beer, wine, spirits and food. The Mayflower Village has recently been refurbished and features within it an area to play a spot of ping pong. The pub is well-known for its pizzas and burgers.

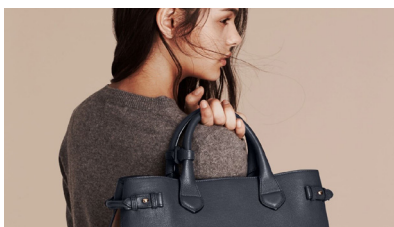
Banana Wharf is the perfect spot for birthdays, celebrations, a spot of lunch or breakfast under the sun. It is the premier choice for waterfront al fresco dining. A large decorative murals depicting the industry in full flow can be seen inside all Banana Wharf venues.

BOUTIQUES OF SILVERSEA

SHOP AT OUR ONBOARD BOUTIQUES

THE BOUTIQUE, DECK 8

Welcome to the Silversea Boutiques. You are cordially invited to discover our new collection of luxury brands and well-appointed interiors. We offer outstanding fine Swiss watches and other brands like Certified Pre Owned Rolex and Tissot. We cannot wait to extend a warm welcome. Our team is waiting for you. Please refer to our daily Chronicles for the opening hours. Boutique's Service: Forgotten Essentials, if you have forgotten any essential items such as a Tooth brush or tooth paste you can purchase these from reception on Deck 5 or through your butler.



INTERNET ACCESS TO MEET YOUR NEEDS

Complimentary unlimited Standard Internet access is offered to all guests.

Premium Wi-Fi with unlimited Internet access is available for purchase for those desiring an elevated online experience. This Premium Internet service provides enhanced features, ideally suited for voice and video calls, streaming, or downloading.

To upgrade to Premium Wi-Fi, simply go on GoSilversea.com. For assistance, please contact the Reception Desk.

	PREMIUM WI-FI	STANDARD WI-FI
BROWSE	✓	✓
MESSAGE	✓	✓
EMAIL	✓	✓
POST	✓	—
VOICE CALL	✓	—
VIDEO CHAT	✓	—
STREAM	✓	—

YOUR GUEST MEAL IS OUR TREAT

Enhance your dining experience with our exclusive offer at La Dame and Kaiseki. Enjoy a memorable meal with your guest on us. Savor exceptional cuisine and impeccable service, making your evening truly special.

Take advantage of this 2-for-1 offer today for the 12th April and only for reservation on that day. A dining fee per person applies



SPA & WIN RAFFLE PRIZES

ALTERNATIVE THERAPY

THE OTIVM BEAUTY SPA, DECK 6

Win a spa "signature service" credit voucher. We have a total of \$500.00 worth of Spa Signature Service credit vouchers to give away. Enter our complimentary raffle for your chance to win one of these credit vouchers. Your entry must be submitted to the Spa Reception on the first day of the cruise. You must be present to win.

OTIVM
THE ORIGINAL ART
OF COMFORT

EMOTIONS

A TASTE OF WHAT'S TO COME

9:15 P.M., VENETIAN LOUNGE, DECK 5

Join the Silversea Singers and Dancers for a taste of what's to come.

You will also meet some of the people that will keep you intrigued and entertained.



EXPLORE OUR 2026 OCEAN VOYAGE DESTINATIONS

163 VOYAGES
152 DESTINATIONS
33 COUNTRIES

Look closer at the world and you'll see every place reveals more than you expected: a clandestine past locked up in arches of brick and stone; a traditional recipe passed down from generation to generation; a burst of bright yellow and orange fall colours in the middle of an emerald forest.

Nobody gets you closer to these epic secrets than Silversea, as we take you behind the scenes of every destination.

Book onboard and receive exclusive 5% onboard savings!



For more information, please contact your Future Cruise Team Barrie and Lauren on Deck 5, or extension 80509 or 60515.

DRESS CODE

SILVERSEA HAS AN ONBOARD DRESS CODE AFTER 6:00 P.M.



When, during the day, casual wear is suitable, akin to standard sports outfits found at five-star resorts, evening wear falls into two categories.

ELEGANT CASUAL

Ladies: trousers, blouses, skirts, or casual dresses.
Gents: open-collar shirts and slacks, jacket optional.

FORMAL OPTIONAL

Ladies: evening gown or cocktail dress.
Gents: tuxedo, dinner jacket, or dark suit with a tie.
Guests can to adhere to the Elegant Casual dress code, but men must wear a jacket in all indoor spaces.

REGARDLESS OF THE DAILY DRESS CODE:

- After 6:00 p.m., indoor spaces prohibit jeans, shorts, sneakers, or flip flop-type footwear.
- Gentlemen dining at La Dame are required to wear a jacket.



ALL DAY DINING

BREAKFAST

ATLANTIDE (DECK 4)

À la Carte 7:30 a.m. – Last Seating 9:00 a.m.

LA TERRAZZA (DECK 7)

Buffet 6:30 a.m. – 9:30 a.m.

LUNCH

ATLANTIDE (DECK 4)

À la Carte 12:00 p.m. – Last Seating 1:30 p.m.

KAISEKI (DECK 4)

Closed

LA TERRAZZA (DECK 7)

Buffet 12:00 p.m. – 3:30 p.m.

THE GRILL (DECK 10) *

À la Carte 12:00 p.m. – Last Seating 3:30 p.m.

OPEN ALL DAY

ARTS CAFÉ (DECK 8)

Light Snacks 6:30 a.m. – 11:00 p.m.

SPACCANAPOLI (DECK 11)

À la Carte 11:00 a.m. – 11:00 p.m.

* Weather permitting

** Reservations required

DINNER

As a courtesy to your fellow guests please respect the times of your dinner reservation.

ATLANTIDE (DECK 4)

À la Carte 6:00 p.m. – Last Seating 8:30 p.m.

S.A.L.T. Kitchen (DECK 4)

À la Carte 6:30 p.m. – Last Seating 9:00 p.m.

KAISEKI (DECK 4) **

À la Carte 6:30 p.m. – Last Seating 9:00 p.m.

A dining fee per person applies

LA TERRAZZA (DECK 7) **

À la Carte 6:30 p.m. – Last Seating 9:00 p.m.

SILVER NOTE (DECK 7) **

À la Carte 7:30 p.m. – Last Seating 10:00 p.m.

THE GRILL (DECK 10) */**

À la Carte 6:30 p.m. – Last Seating 9:00 p.m.

LA DAME (DECK 8) **

À la Carte 6:30 p.m. – Last Seating 9:00 p.m.

Gentlemen: Jacket required

A dining fee per person applies

Should you wish to cancel your reservation at La Dame, please note that you must do so by latest 2:00pm on the day of the reservation, otherwise the full cover fee per person will be billed to your Guest Account.

IN-SUITE DINING

24-hour

The menu is available on the TV.

To place your order please contact your butler or call extension 500. In-Suite Dining is also available in other public areas when our dining venues are not open for service.

At Silversea Cruises, we take maximum food precautionary measures to ensure the safest quality product is offered to our guests; Worldwide Public Health Services advise that consuming raw or undercooked meats, seafood, shellfish, eggs, milk, or poultry may increase your risk of food-borne illness, especially if you have certain medical conditions.

ONBOARD SMOKING POLICY

Smoking of cigarette, e-cigarette and vaporizer is permitted in the Connoisseur's Corner (inside and outside); at designated tables and seating outside the Panorama Lounge (starboard side) and on the Pool Deck (port side).

BAR HOURS

9:00am – 10:30pm

10:00am – until late

11:00pm – until late

6:00pm – until late

6:30am – until late

6:00pm – 11:00pm

7:00pm – until late

9:00pm – until late

*Weather permitting

Pool Bar * [Deck 10]

Panorama Lounge [Deck 9]

Dolce Vita [Deck 5]

S.A.L.T. Bar [Deck 4]

Arts Café [Deck 8]

Observation Library [Deck 11]

Silver Note [Deck 7]

Connoisseur's Corner [Deck 9]

Smoking of cigars and pipes is allowed only in the Connoisseur's Corner (inside and outside).

Smoking is not allowed: In guest suites and guest suite verandas/balconies and inside all public areas, lounges and bars.

SERVICES

OTIVM SPA | DECK 6

BEAUTY SALON AND BARBER SHOP

Dial 600 for appointments.

8:00 a.m. – 8:00 p.m.

Later appointments until 10:00 p.m. available on request.

SAUNA & STEAM ROOM | DECK 6

8:00 a.m. – 8:00 p.m.

FITNESS CENTRE | DECK 6

5:00 a.m. – 10:00 p.m.

Limited spaces available for classes.

Age restriction: over 18 to use the facilities. 16–18 allowed in with guardian.

FUTURE CRUISE SALES | DECK 5

Please dial 80509 or 60515 or consult your suite ITV to request an appointment.

7:30 a.m. – 10:00 a.m. | 5:00 p.m. – 7:00 p.m.

BOUTIQUES | DECK 8

7:30 p.m. – 11:00 p.m.

Window gallery pop up boutique open all day for preview and viewing.

CASINO | DECK 7

Slots: 7:00 p.m. – until late

Tables: 7:00 p.m. – until late

Age restriction: over 18 to use the facilities

SHORE CONCIERGE DESK | DECK 5

Dial 551 for assistance during daily opening hours.

3:00 p.m. – 7:00 p.m.

GUEST RELATIONS MANAGER | DECK 5

Dial 60502 for assistance.

8:00 a.m. – 12:00 p.m. | 4:00 p.m. – 8:00 p.m.

MEDICAL CENTRE | DECK 3

Dial 10333 during clinic hours.

8:00 a.m. – 9:00 a.m. | 5:00 p.m. – 6:00 p.m.

Medical assistance is also available by appointment.

Dial 555 (Reception) after hours.

Emergency service is available 24 hours a day.

Please use the Forward elevator or Forward stairs to reach the clinic.

Kindly ask about charges prior to consultation.

IN THE EVENT OF AN EMERGENCY PLEASE DIAL 999

Saturday, 12 April 2025

Sunrise 6:17 a.m. • Sunset 7:56 p.m.

AFTERNOON ACTIVITIES

12:15	Guitar Entertainer Felipe performs for guests' listening pleasure	Dolce Vita (5)
12:15	Silver Dawn Band plays for your dancing and listening pleasure	Pool Deck (10)
2:00	Guided Spa Tour: Find the best treatment for you! Enjoy a guided tour of the spa and experience our free demo massage, complementary skin analysis or posture analysis (until 8:00p.m.)	OTIVM Spa (6)
3:00	Meet your onboard acupuncturist Dr. Liliana Grande and Medi Spa Physician Dr. Marco (until 8:00p.m.)	OTIVM Spa (6)
3:00	Meet your onboard fitness instructor Bengeorge (until 8:00p.m.)	Fitness Centre (6)
3:00	Meet the S.A.L.T. Host Drake Robertson (until 5:00 p.m.)	S.A.L.T. Lab (4)
5:00	Catholic Mass with Father Adam	Silver Note (7)
5:30	For special dietary requirements, please see our Executive Chef	S.A.L.T. Kitchen (4)

EVENING ACTIVITIES

DRESS CODE: ELEGANT CASUAL

6:15	Silver Dawn Band plays for your dancing and listening pleasure	Panorama Lounge (9)
6:30	Silver Dawn prepares to sail	
6:30	Solo Travelers Get Together with your Gentlemen Hosts Chris and Jeff	Panorama Lounge (9)
6:30	German Get Together with your International Hostess Daniela	Dolce Vita (5)
6:30	Pianist Remon and Guitar Entertainer Felipe alternate performing for guests' listening pleasure	Dolce Vita (5)
7:00	Silver Dawn sails for Rouen, France	
7:30	Luxury handbag collectors club special: Hermes Kelly, Chanel, Louis Vuitton, Stella Mccartney. Leather & accessories Join Cromwell today for an exclusive preview of our selected collection	Boutique (8)
7:30	Jazz Pianist André plays for guests' listening pleasure	Silver Note (7)
8:15	Join Silver Note Jazz Duo Esther and André as they entertain you with their live music	Silver Note (7)
9:00	Pianist Remon performs for guests' listening pleasure	Dolce Vita (5)
9:30	Boutique's Rolex watch preview & sign up booking. Reserve and book a limited Rolex time piece. Join Cromwell today to find out more. Rolex watches are available to purchase onboard. Limited availability, make a reservation today	Boutique (8)
9:15	Showtime! Silversea Proudly Presents: Emotions Join your Entertainment Cruise Staff and the Silversea Singers and Dancers for a taste of what's to come. You will also meet some of the people that will keep you intrigued and entertained	Venetian Lounge (5)
10:15	DJ Gabor invites you to a party to celebrate the songs you love (until late)	Panorama Lounge (9)

Evening Dress Code

*Some of the below mentioned dress codes may be subject to change due to operational reasons.

12 April – Southampton	Elegant Casual	21 April – Hamburg	Elegant Casual
13 April – Rouen.....	Elegant Casual	22 April – Day at sea	Formal Optional
14 April – Rouen.....	Elegant Casual	23 April – Copenhagen	Elegant Casual
15 April – Rouen.....	Elegant Casual	24 April – Copenhagen	Elegant Casual
16 April – Day at sea	Formal Optional	25 April – Day at sea	Formal Optional
17 April – Amsterdam.....	Elegant Casual	26 April – Helsinki	Elegant Casual
18 April – Amsterdam.....	Elegant Casual	27 April – Tallinn.....	Elegant Casual
19 April – Day at sea	Elegant Casual	28 April – Tallinn.....	Formal Optional
20 April – Hamburg.....	Elegant Casual	29 April – Stockholm	Elegant Casual

SHIP PROCEDURES

Remember to carry your **Suite Key Card plus copy of your Passport (digital copy or photo copy is accepted)** whenever going ashore as this is your only valid identification for reboarding the vessel.

PIER INFORMATION

Silver Dawn is docked in 101 BERTH, City Cruise Terminal, Western Dock, Southampton
SO15 1HJ

IMPORTANT NOTICE

Silversea charges in United States Dollars for all shipboard transactions. We would like you to be aware that your credit card company may charge a foreign transaction fee. Silversea processes shipboard credit card transactions through the United Kingdom. Should you wish to register a different credit card to settle your account, please see our Reception Staff on Deck 5.

CURRENCY EXCHANGE

The local currency is British Pound (GBP). Guests going ashore can expect the following rates of exchange:

1 USD = 0.77 EUR approx.

1 EUR = 0.85 EUR approx.

SHIP'S AGENT

(for use in emergencies only)

DENHOLM PORT SERVICES

Unit 8B, Imperial House, Imperial Way,
Southampton, SO15 0RB

Phone: +44 (0)7581 047215

Email: cruise.south@denholm-portservices.com

Going ashore in Southampton, *England*

EXCURSIONS - IN-TRANSIT

The excursions depart at the times listed below from the pier ashore. As a courtesy to your fellow guests and to allow the punctual departure of your excursion, we ask all participants to proceed ashore **10 minutes** prior to your departure time. If you are late, unfortunately the transportation will not wait.

Please do not forget to bring your excursion tickets and Suite Key Card plus copy of your Passport (digital copy or photo copy is accepted).

SOU-D	HISTORIC WINCHESTER	8:00 a.m.
SOU-A1	STONEHENGE AND SALISBURY	9:30 a.m.
SOU-001	BRITISH BEAULIEU & VINTAGE CARS	2:00 p.m.

SHUTTLE BUS

A complimentary Shuttle Bus Service will be operating between the Terminal and Harbour Parade from 9:30 a.m. until 5:00 p.m. (last bus from town). Distance to Harbour Parade: approximately 15-minute drive (one way). We recommend arriving at least 10 minutes prior to the shuttle bus departure at the pickup locations. Shuttle bus schedule will be posted at the Shore Concierge Desk, Deck 5 and at the gangway.

GOING ASHORE INDEPENDENTLY

The Shore Concierge desk takes pride in its ability to help guests on tour as well as guests who prefer individual sightseeing. The team will make private arrangements and suggest itineraries for independent exploration. If you just want to grab a taxi or to walk ashore, the Shore Concierge is eager to supply local information and useful tips.

EXCURSIONS

Port information and full tour descriptions are available on the interactive TV system in your suite for each port of call for this cruise.

VESSEL GENERAL PERMIT

Silversea is committed to protecting the environment and has a responsibility to ensure that the waterways on which it sails on are not polluted by the fleet. Therefore, we ask for your cooperation in helping us to enforce this policy. Please do not throw anything overboard at any time and minimize the usage of water. Be mindful of detergents and soaps used onboard. May we request that you use water sensibly by turning off faucets / taps and showers and do not allow them to run continuously. Please report any possible situations that could cause pollution to the seas to the Reception Desk on Deck 5 or by calling 555 on any of the ship's telephones. Thank you for your cooperation.

PLEASE NOTE THIS USEFUL INFORMATION WHEN GOING ASHORE.

SILVER DAWN SATELLITE PHONE NUMBER: +1 786 605 5750

All Aboard
6:30 p.m.