

# Chronicles

*News and Information for all onboard events*

**TUESDAY, 22 APRIL 2025**

EN ROUTE TO COPENHAGEN,  
DENMARK

**DRESS CODE: FORMAL OPTIONAL**

Ladies: evening gown or cocktail dress.

Gents: tuxedo, dinner jacket, or dark suit with a tie.

Guests can adhere to the Elegant Casual dress code, but men must wear a jacket in all indoor spaces.

**TODAY'S WEATHER**

*Cloudy*

**High: 48°F 10°C**

**Low: 47°F 8°C**



## AT SEA

*Aboard Silver Dawn*

# THE VENETIAN SOCIETY

A SPECIAL CIRCLE OF FRIENDS

When you embark on your first Silversea journey, you join the Venetian Society, an exclusive cruise loyalty program for global explorers. Membership offers unique benefits, including onboard recognition, invitations to special events, ship visitation rights, and a 5% savings on select voyages.

As you sail more, your benefit grows with each new milestone:

- 100 days: 5% savings on future sailings
- 250 days: 10% savings on future sailings
- 350 days: complimentary 7-day cruise
- 500 days: complimentary 14-day cruise
- Every 150 days beyond 500: complimentary 7-day cruise

All milestones include complimentary laundry and pressing services (excluding wet cleaning for 100 days). Restrictions may apply. For more details, visit our Terms and Conditions at [www.silversea.com](http://www.silversea.com).



## THERMAGE CPT

SKIN TIGHTENING THERAPY

THE OTIVM BEAUTY SPA  
DECK 6

Thermage CPT is the premier non-invasive, skin-tightening therapy that uses radio frequency to improve the appearance of sagging or loose skin on the face and body. Tighten and contour in just one treatment.



## PEARLS

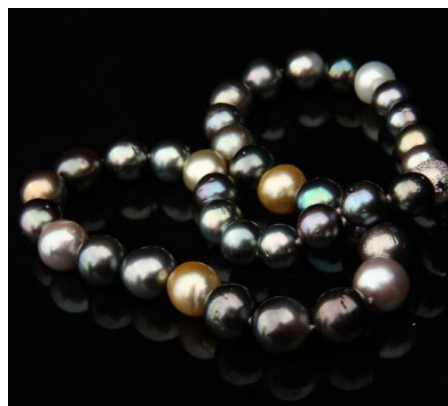
CULTURED, FRESHWATER & SOUTH SEA

THE BOUTIQUE  
DECK 8

The pearl is the oldest gemstone known to man, with a history dating back more than seven thousand years.

From the timeless appeal of the white South Sea pearl to the exotic lustre of the Tahitian pearl found throughout French Polynesia, these gems have captured hearts for millennia.

Visit the Boutique to view our pearl collection. All Hubert designs are tax and duty-free and exempt from US customs charges. Inquire in-store for details.



## DYNAMIC INTERNATIONAL SHOWMAN

SHOWTIME WITH HEADLINE

ENTERTAINER KYLE ESPLIN

AT: 9:30 PM  
VENETIAN LOUNGE, DECK 5

Kyle Esplin is a vibrant pianist singer who makes a piano ring like no other. His all-action live show which includes everything from tender Ballads, to Classical to Rock'n'Roll, has to be seen to be believed, and he takes Boogie-Woogie piano playing to an incredible new level.



## GRAND MEDITERRANEAN 2026

A new look at the marvels and beauty of the Old World. Silversea's Mediterranean Grand Voyage is the most immersive way to discover this compelling region in-depth, spanning Iberia, the Western Med, the Adriatic, and the Greek Isles. Sail in late summer for gentle warmth and to travel further, free from the busy crowds. This unforgettable, 50-day voyage combines iconic cities such as Istanbul, Dubrovnik, Casablanca, and Barcelona, with hidden gems such as Volos, Gythion, Kotor, and Amalfi. Enjoy overnight stays in marquee destinations including Malaga, Livorno, and Istanbul, options to go deeper on land, and exclusive events that reveal destinations in up-close, personal ways.

Book onboard and receive exclusive 5% onboard savings!



For more information, please contact your Future Cruise Team Barrie and Lauren on Deck 5, or extension 80509 or 60515.

## BLACKJACK TOURNAMENT



4:30 PM  
CASINO, DECK 7

Come to the Casino and join our Blackjack Tournament. Visit the Casino on board and try your championship skills! Whether you are a new player or a Blackjack veteran, taking part in Blackjack Tournaments can be a lot of fun! An entry fee is applicable. Ask our Casino staff for more information. Have fun and good luck!

# TUESDAY, 22 APRIL 2025

## MORNING ACTIVITIES

7:00	Morning Stretch (sign up required)	Fitness Centre (6)
8:00	Pure form Pilates (sign up required)	Fitness Centre (6)
9:00	Complimentary Massage taster	OTIVM Spa (6)
9:00	Today's Silver Quiz, Crossword Puzzle and Sudoku are available (Return the Silver Quiz to Reception by 3:00 pm - prize points for the most accurate quiz that is returned earliest)	Arts Café (8)
9:00	Board games will be available for your enjoyment (unhosted)	Observation Lounge (11)
9:00	Shuffleboard will be set up for your enjoyment throughout the day (unhosted) * weather permitting	Outside Panorama Lounge (9)
9:00	Table Tennis will be available for your enjoyment (unhosted) * weather permitting	Outside Panorama Lounge (9)
9:00	Cornhole will be available to play * weather permitting	Outside Panorama Lounge (9)
9:30	Knit and Stitch Club: meet with fellow knitters and stitchers (unhosted, no material provided)	Observation Lounge (11)
9:30	<b>S.A.L.T. Lab Class: "The Joy of Berries: Wild Nordic Fruit and the Taste of Summer"</b> (please pre-register with guest services)	S.A.L.T. Lab (4)
9:45	<b>Destination Lecture with Dr. Glenn E. Robinson- Wonderful, Wonderful Copenhagen!</b> Guarding the western entrance to the Baltic Sea, the Danish capital of Copenhagen has played an outsized strategic role in the region for centuries.	Venetian Lounge (5)
10:00	Bridge Beginners Lesson with your Bridge Instructors Joe and Marilyn	S.A.L.T. Kitchen (4)
10:00	Facial Rejuvenation walk-in clinic with Dr. Marco	OTIVM Spa (6)
10:30	Acupuncture walk-in clinic with Dr. Liliana Grande (complimentary consultation)	OTIVM Spa (6)
10:45	Travia Travel Quiz: Denmark with your Entertainment Cruise Staff	Panorama Lounge (9)
10:45	Shuffleboard Tournament: Join your Entertainment Cruise Staff for this daytime activity * weather permitting	Outside Panorama Lounge (9)
10:45	Coffee Chat with your Entertainment Cruise Staff	Arts Café (8)
11:00	Mahjong Open session (supervised) with fellow guest Reeva	S.A.L.T. Kitchen (4)
11:00	<b>Enrichment Lecture with Jeffrey A. Weinberg- The Broken Branch: Congress' Challenges:</b> Explore why Americans have lost confidence in Congress and how to restore it.	Venetian Lounge (5)
11:00	Intermediate Bridge Lesson with your Bridge Instructors Joe and Marilyn	S.A.L.T. Kitchen (4)
11:15	Sudoku Challenge with your International Hostess Daniela	Panorama Lounge (9)
11:15	From the timeless appeal of the white South Sea pearl to the exotic lustre of the Tahitian pearl found throughout French Polynesia, these gems have captured hearts for millennia. Visit the Boutique to view our pearl collection	Boutique (8)
11:30	Cornhole Tournament with some of the Silver Dawn Officers * weather permitting	Outside Panorama Lounge (9)
11:30	Mileage Pool: Join your Entertainment Cruise Staff to guess how many miles we have travelled since Hamburg	Arts Café (8)

## AFTERNOON ACTIVITIES

12:00	Nautical and weather information announcement by Captain Ivo Botica	Bridge Camera Channel and Public Address System
12:00	Gyros / Greek corner- prepared by Executive Chef Ross and his team * weather permitting	Pool Grill (10)
1:30	Mahjong Beginners lesson 3 (supervised) with fellow guest Reeva	S.A.L.T. Kitchen (4)
1:45	Duplicate Bridge Play with your Bridge Instructors Joe and Marilyn	S.A.L.T. Kitchen (4)
2:00	<b>S.A.L.T. Lab Class: "The Joy of Berries: Wild Nordic Fruit and the Taste of Summer"</b> (please pre-register with guest services)	S.A.L.T. Lab (4)
2:00	Dance Class: Join your Gentlemen Hosts Jeff & Chris and your Silversea Dancers for this daytime activity	Panorama Lounge (9)
2:15	Discover John Hardy's fine jewelry, inspired by Bali's time-honored traditions. Artisans craft unique masterpieces using traditional techniques, with collections that convey evocative symbolism and honor the transmission of creative energy. Explore the onboard collection of men's and women's jewelry at the Boutique	Boutique (8)
2:30	<b>Arts Class with Shelley Ocana: Landscapes of Germany-</b> Illustrate the country scenes dotted with castles, old houses, country lanes and wildflowers of Germany in watercolor using loose wet washes and color gradients for distances. Or, pick a subject of your own.	S.A.L.T. Kitchen (4)
3:00	Table Tennis Tournament: Join your Entertainment Cruise Staff for this daytime activity * weather permitting	Outside Panorama Lounge (9)
3:00	<b>Enrichment Lecture with Mark Lubienski- Espionage &amp; Treachery in the Cold War:</b> Enjoy stories of Cold War spies and double agents, and meet the spy who saved the world.	Venetian Lounge (5)
4:00	<b>Bingo!</b> with a member of the Entertainment Cruise Staff	Panorama Lounge (9)
4:00	Restore Facial Contour with Dr. Marco	OTIVM Spa (6)
4:15	Discover the must-have fine jewelry collection from Suzanne Kalan, internationally recognized for its modern elegance. For 35 years, Suzanne has infused her personal touch into each piece, featuring handpicked semi-precious gemstones like topaz, amethyst, and quartz, expertly paired with diamonds. Don't miss the chance to browse these unique creations and add a modern twist to your jewelry collection.	Boutique (8)
4:30	Blackjack Tournament with your friendly Casino Staff	Casino (7)
4:30	<b>S.A.L.T. Lab Class: "The Joy of Berries: Wild Nordic Fruit and the Taste of Summer"</b> (please pre-register with guest services)	S.A.L.T. Lab (4)
4:30	Three ways to feel better with acupuncture, herbs & cupping with Dr. Liliana	OTIVM Spa (6)
4:45	<b>Team Trivia</b> - Join Cruise Director Moss for this daytime activity	Dolce Vita (5)
5:00	Catholic Mass with Father Adam	Silver Note (7)
5:30	Golf Putting Competition: Join your Entertainment Cruise Staff for this daytime activity	Lobby (4)
5:30	Evening Stretch (sign up required)	Fitness Centre (6)

## EVENING ACTIVITIES

## DRESS CODE: FORMAL OPTIONAL

6:00	Pianist Remon and Guitar Entertainer Felipe alternate performing for guests' listening pleasure	Dolce Vita (5)
6:15	Silver Dawn Band plays for your listening pleasure	Panorama Lounge (9)
6:30	Solo Travellers get together with your Gentlemen Hosts Jeff & Chris	Panorama Lounge (9)
7:30	Jazz Pianist André plays for guests' listening pleasure	Silver Note (7)
8:15	Join Silver Note Jazz Duo Esther and André as they entertain you with their live music	Silver Note (7)
9:00	Guitar Entertainer Felipe and Pianist Remon alternate performing for guests' listening pleasure	Dolce Vita (5)
9:30	<b>Showtime!</b> Silversea Proudly Presents: <b>Headline Entertainer Kyle Esplin: Dynamic International showman</b> Kyle Esplin is a vibrant pianist singer who makes a piano ring like no other. His all-action live show which includes everything from tender Ballads, to Classical to Rock'n'Roll, has to be seen to be believed, and he takes Boogie-Woogie piano playing to an incredible new level.	Venetian Lounge (5)
10:30	DJ Gabor invites you to a party to celebrate the songs you love (until late)	Panorama Lounge (9)





# All Day Dining

## BREAKFAST

ATLANTIDE (DECK 4)

À la Carte 8:00 a.m. – Last Seating 9:30 a.m.

LA TERRAZZA (DECK 7)

Buffet 7:30 a.m. – 10:00 a.m.

## LUNCH

ATLANTIDE (DECK 4)

À la Carte 12:00 p.m. – Last Seating 1:30 p.m.

KAISEKI (DECK 4)

À la Carte 12:00 p.m. – Last Seating 2:30 p.m.

LA TERRAZZA (DECK 7)

Buffet 12:00 p.m. – 2:00 p.m.

THE GRILL (DECK 10) \*

À la Carte 12:00 p.m. – Last Seating 3:30 p.m.

## OPEN ALL DAY

ARTS CAFÉ (DECK 8)

Light Snacks 6:30 a.m. – 11:00 p.m.

SPACCANAPOLI (DECK 11)

À la Carte 11:00 a.m. – 11:00 p.m.

\* Weather permitting

\*\* Reservations required

## DINNER

*As a courtesy to your fellow guests please respect the times of your dinner reservation.*

ATLANTIDE (DECK 4)

À la Carte 6:00 p.m. – Last Seating 8:30 p.m.

S.A.L.T. Kitchen (DECK 4)

À la Carte 6:30 p.m. – Last Seating 9:00 p.m.

KAISEKI (DECK 4) \*\*

À la Carte 6:30 p.m. – Last Seating 9:00 p.m.

A dining fee per person applies

LA TERRAZZA (DECK 7) \*\*

À la Carte 6:30 p.m. – Last Seating 9:00 p.m.

SILVER NOTE (DECK 7) \*\*

À la Carte 7:30 p.m. – Last Seating 10:00 p.m.

THE GRILL (DECK 10) \*/\*\*

À la Carte 6:30 p.m. – Last Seating 9:00 p.m.

LA DAME (DECK 8) \*\*

À la Carte 6:30 p.m. – Last Seating 9:00 p.m.

Gentlemen: Jacket required

A dining fee per person applies

*Should you wish to cancel your reservation at La Dame, please note that you must do so by latest 2:00pm on the day of the reservation, otherwise the full cover fee per person will be billed to your Guest Account.*

## BAR HOURS

9:00am – 10:30pm

10:00am – until late

10:00am – until late

6:00pm – until late

6:30am – until late

6:00pm – 11:00pm

7:00pm – until late

9:00pm – until late

\*Weather permitting

Pool Bar \* [ Deck 10 ]

Panorama Lounge [ Deck 9 ]

Dolce Vita [ Deck 5 ]

S.A.L.T. Bar [ Deck 4 ]

Arts Café [ Deck 8 ]

Observation Library [ Deck 11 ]

Silver Note [ Deck 7 ]

Connoisseur's Corner [ Deck 9 ]

# SERVICES

## OTIVM SPA | DECK 6

### BEAUTY SALON AND BARBER SHOP

Dial 600 for appointments.

8:00 a.m. – 8:00 p.m.

*Later appointments until 10:00 p.m. available on request.*

## SAUNA & STEAM ROOM | DECK 6

8:00 a.m. – 8:00 p.m.

## FITNESS CENTRE | DECK 6

5:00 a.m. – 10:00 p.m.

*Limited spaces available for classes.*

*Age restriction: over 18 to use the facilities. 16–18 allowed in with guardian.*

## FUTURE CRUISE SALES | DECK 5

Please dial 60515 or 80509 or consult your suite ITV to request an appointment.

8:00 a.m. – 11:00 a.m. | 3:00 p.m. – 5:30 p.m.

## BOUTIQUES | DECK 8

10:00 a.m. – 10:00 p.m.

*Toiletries and other essential items are available for purchase upon request in the Boutique or through your Butler.*

*Dial 555 (Reception) for assistance.*

## CASINO | DECK 7

Slots: 10:00 a.m. – until late

Tables: 4:00 p.m. – 6:00 p.m.

9:00 p.m. – until late

*Age restriction: over 18 to use the facilities.*

## SHORE CONCIERGE DESK | DECK 5

Dial 551 for assistance

during daily opening hours.

9:00 a.m. – 12:00 p.m. | 3:00 p.m. – 7:00 p.m.

## GUEST RELATIONS MANAGER | DECK 5

Dial 60502 for assistance.

8:00 a.m. – 12:00 p.m. | 4:00 p.m. – 8:00 p.m.

## MEDICAL CENTRE | DECK 3

Dial 10333 during clinic hours.

9:30 a.m. – 11:00 a.m. | 5:30 p.m. – 6:30 p.m.

Medical assistance is also available by appointment.

Dial 555 (Reception) after hours.

*Emergency service is available 24 hours a day.*

*Please use the Forward elevator or Forward stairs to reach the clinic.*

*Kindly ask about charges prior to consultation.*

## IN-SUITE DINING

24-hour

The menu is available on the TV.

To place your order please contact your butler or call extension 500. In-Suite Dining is also available in other public areas when our dining venues are not open for service.

*At Silversea Cruises, we take maximum food precautionary measures to ensure the safest quality product is offered to our guests; Worldwide Public Health Services advise that consuming raw or undercooked meats, seafood, shellfish, eggs, milk, or poultry may increase your risk of food-borne illness, especially if you have certain medical conditions.*

## TV VOLUME

We are aware of the problems surrounding the noise level of the televisions carrying into some of the suites. We are working hard to fix this, but in the meantime please be so kind as to keep your TV volume low so as not to disturb your neighbours. Thank you for your understanding and patience.

**IN THE EVENT OF AN  
EMERGENCY PLEASE DIAL 999**