

# Chronicles

*News and Information for all onboard events*

**WEDNESDAY, 23 APRIL 2025**

COPENHAGEN, DENMARK

**Arrival:** 8:00 a.m.

**Overnight Stay**

**DRESS CODE: ELEGANT CASUAL**

Ladies: trousers, blouses, skirts, or casual dresses.

Gents: open-collar shirts and slacks, jacket optional.

No jeans, shorts or flip flop type footwear after 6:00 P.M. in indoor venues.

**TODAY'S WEATHER**

*Cloudy*

**High:** 52°F 11°C

**Low:** 47°F 8°C



## COPENHAGEN, DENMARK

*Aboard Silver Dawn*



# PLAN AHEAD

## Upcoming ports



DATE	PORT	ARRIVE	DEPART
24 April	Copenhagen	-	6:00 p.m.
25 April	Day at sea	-	-
26 April	Helsinki	8:00 a.m.	11:00 p.m.

## YOUR EXPERIENCES ASHORE

### SHORE EXCURSION SUGGESTIONS

Enhance your voyage with our exceptional excursions. From day excursions or private arrangements, we offer you the world. Please visit the Shore Concierge Desk to discuss your options and reserve your excursions. If you prefer, you may request your excursions via MyCruise on you in-suite TV or by completing the Excursion Booking Form in your suite. Your butler will be pleased to deliver this if completed by our deadline.

### CPH-S / A Swedish Sojourn 5.00 Hours | \$109

Make the most of your time and explore two countries in one day: Denmark and Sweden. Discover the city of Lund and its cathedral, take a stroll in the medieval city centre of Malmö and let yourself amaze by the famous Copenhagen landmarks.

**DECK 5 EXT. 551**  
**OPENING HOURS:**  
7:30 A.M. - 10:30 A.M. | 4:00 P.M. - 7:00 P.M.



## COPENHAGEN, DENMARK

### *The Little Mermaid*

The Little Mermaid, perched on a rock by the water's edge in Copenhagen's Churchill Park, is a figure of profound historical and cultural significance, embodying the eponymous character from Hans Christian Andersen's fairy tale that inspired the acclaimed Walt Disney film.

This bronze statue, a primary symbol and principal attraction of the city, was commissioned in 1909 by Carl Jacobsen, son of Carlsberg Breweries' founder. Crafted by the sculptor Edvard Eriksen, the figure was modelled after a dancer, Ellen Price for the facial features, and his wife, Eline Eriksen, for the body.

Unveiled on 23rd August 1913, the first impression of the statue is its size. Standing 1.25m tall and weighing 175kg, she is surprisingly petite. Her proximity to the shoreline has led to many misadventures over the past 110 years. The statue has been beheaded twice, arm severed, throat slashed, painted, dressed, veiled, and even blown up in attempts to dislodge her from her perch. Yet, she remains one of the most photographed monuments in Denmark.

### SIGHTS

- Nyhavn
- Kastellet & Little Mermaid
- Copenhagen University Library
- Frederik's Church (Marble Church)
- Carlsberg Brewery
- Rosenborg Castle
- Christiansborg Palace
- Tivoli Gardens

### SHOPPING AND CUISINE

Home to mega-brewer Carlsberg, Copenhagen is also a city for hop enthusiasts, and there is a thriving craft brewing scene to sample. Danish smørrebrød sandwiches are a must try, or for something a little more substantial, settle in for a culinary voyage and try a taster menu - the city's restaurants are littered with Michelin stars.

Strøget, Europe's longest shopping street, which runs through the centre of the city. It's a good place to shop if you're looking for major international brands such as Lego, H&M and also the Harrods of Danish design.

# LA DAME

## THE GRANDE CUISINE FRANCAISE ONBOARD

Experience the pinnacle of French fine dining, where timeless culinary traditions harmoniously blend with contemporary creativity.

La Dame stands as a custodian of the esteemed principles of Grande Cuisine française, a legacy crafted by the illustrious chefs of Louis XIV's court. This heritage is lovingly nurtured by a brigade trained in the finest of houses, who invite you to take part in an extraordinary gastronomic journey.

Delight in a symphony of rich, balanced flavors, whether through meticulously designed tasting menus or à la carte offerings, all complemented by an exquisite selection of wines.

Please contact Reception, your Butler or the Restaurant Team to secure your seat.

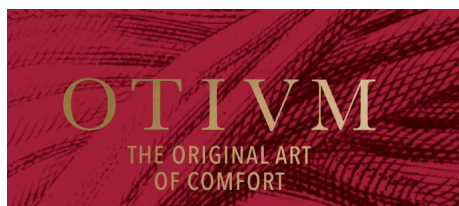


# KERATIN EXPRESS BLOW OUT

## GOODBYE TO FRIZZ

THE OTIVM BEAUTY SPA  
DECK 6

Say goodbye to frizz in just one hour with the new Keratin Complex Smoothing Therapy Express Blow Out. This specially formulated, revitalizing and rejuvenating treatment for the hair eliminates frizz and lasts up to six weeks. With its unique formulation, Express Blow Out infuses natural Keratin in the shortest amount of time so your hair can be washed just eight hours after the treatment.



# DESIGNER SUNGLASSES

BOUTIQUES AT SILVERSEA

THE BOUTIQUE  
DECK 8

Proper eyewear is as essential to the eyes as sunscreen is to the skin, and thanks to several top designers, we can all look good as we look well. Their sunglasses also make it easy to update your style with a little detail. Choose from designs by the venerable yet forward-thinking Prada, Tom Ford, Bottega Veneta, Ray-Ban, the essence of cool. Come and see us, we will be delighted to help you find the perfect memento of your travels.

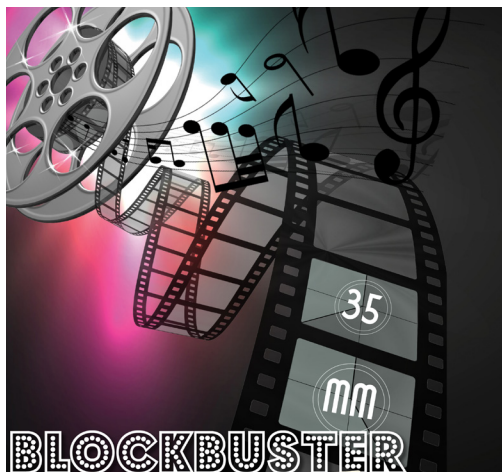


# 35MM BLOCKBUSTER

## TONIGHT'S SHOW

AT 9:15 P.M.  
VENETIAN LOUNGE, DECK 5

From the soundtracks of some of the world's biggest movies, we present a selection of your favourite hit songs. Memorable movies, with unforgettable music, featuring our Silversea singers and dancers, with the Silver Dawn live band.



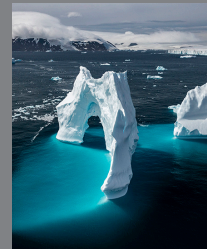
# EXCLUSIVE 10% ONBOARD SAVINGS

Capture the excitement of the moment and invest in your future adventures with our limited-time 10% Onboard Savings (usually 5%) on selected Ocean-going or Expedition sailing in 2025 & 2026 (excluding World Cruises and Grand Voyages).

Discover stunning destinations such as the Mediterranean, Caribbean, Kimberley, Arctic, Antarctica, Alaska, Australia and New Zealand—all waiting for you. Combinable with our Door-to-Door, Port-to-Port and Essential fares, the value is extraordinary and the opportunity is available only when you book onboard now.

Offer expires on April 30th 2025.

Visit our Future Cruise Team today to secure!



For more information, please contact your Future Cruise Team Barrie and Lauren on Deck 5, or extension 80509 or 60515.

# ANZAC DAY COMMEMORATION



COMING UP: 25 APRIL, 2025  
05:30 A.M. PANORAMA LOUNGE

Join us to honour and commemorate those who have sacrificed and served, and those who continue to serve, in the Australia and New Zealand armed forces  
**LEST WE FORGET.**





# ALL DAY DINING

## BREAKFAST

ATLANTIDE (DECK 4)

À la Carte 8:00 a.m. – Last Seating 9:30 a.m.

LA TERRAZZA (DECK 7)

Buffet 7:00 a.m. – 10:00 a.m.

## LUNCH

ATLANTIDE (DECK 4)

À la Carte 12:00 p.m. – Last Seating 1:30 p.m.

KAISEKI (DECK 4)

À la Carte 12:00 p.m. – Last Seating 2:30 p.m.

LA TERRAZZA (DECK 7)

Buffet 12:00 p.m. – 2:00 p.m.

THE GRILL (DECK 10) \*

À la Carte 12:00 p.m. – Last Seating 3:30 p.m.

## OPEN ALL DAY

ARTS CAFÉ (DECK 8)

Light Snacks 6:30 a.m. – 11:00 p.m.

SPACCANAPOLI (DECK 11)

À la Carte 11:00 a.m. – 11:00 p.m.

\* Weather permitting

\*\* Reservations required

## DINNER

*As a courtesy to your fellow guests please respect the times of your dinner reservation.*

ATLANTIDE (DECK 4)

À la Carte 6:00 p.m. – Last Seating 8:30 p.m.

S.A.L.T. Kitchen (DECK 4)

À la Carte 6:30 p.m. – Last Seating 9:00 p.m.

KAISEKI (DECK 4) \*\*

À la Carte 6:30 p.m. – Last Seating 9:00 p.m.

A dining fee per person applies

LA TERRAZZA (DECK 7) \*\*

À la Carte 6:30 p.m. – Last Seating 9:00 p.m.

SILVER NOTE (DECK 7) \*\*

À la Carte 7:30 p.m. – Last Seating 10:00 p.m.

THE GRILL (DECK 10) \*/\*\*

À la Carte 6:30 p.m. – Last Seating 9:00 p.m.

LA DAME (DECK 8) \*\*

À la Carte 6:30 p.m. – Last Seating 9:00 p.m.

Gentlemen: Jacket required

A dining fee per person applies

*Should you wish to cancel your reservation at La Dame, please note that you must do so by latest 2:00pm on the day of the reservation, otherwise the full cover fee per person will be billed to your Guest Account.*

## IN-SUITE DINING

24-hour

The menu is available on the TV.

To place your order please contact your butler or call extension 500. In-Suite Dining is also available in other public areas when our dining venues are not open for service.

*At Silversea Cruises, we take maximum food precautionary measures to ensure the safest quality product is offered to our guests; Worldwide Public Health Services advise that consuming raw or undercooked meats, seafood, shellfish, eggs, milk, or poultry may increase your risk of food-borne illness, especially if you have certain medical conditions.*

## ONBOARD SMOKING POLICY

**Smoking of cigarette, e-cigarette and vaporizer is permitted in the Connoisseur's Corner** (inside and outside); at designated tables and seating outside the Panorama Lounge (starboard side) and on the Pool Deck (port side).

**Smoking of cigars and pipes is allowed only** in the Connoisseur's Corner (inside and outside).

**Smoking is not allowed:** In guest suites and guest suite verandas/balconies and inside all public areas, lounges and bars.

# SERVICES

## OTIVM SPA | DECK 6

### BEAUTY SALON AND BARBER SHOP

Dial 600 for appointments.

8:00 a.m. – 8:00 p.m.

*Later appointments until 10:00 p.m. available on request.*

## SAUNA & STEAM ROOM | DECK 6

8:00 a.m. – 8:00 p.m.

## FITNESS CENTRE | DECK 6

5:00 a.m. – 10:00 p.m.

*Limited spaces available for classes.*

*Age restriction: over 18 to use the facilities. 16–18 allowed in with guardian.*

## FUTURE CRUISE SALES | DECK 5

Please dial 60515 or 80509 or consult your suite ITV to request an appointment.

8:00 a.m. – 11:00 a.m. | 3:00 p.m. – 7:00 p.m.

## BOUTIQUES | DECK 8

Closed due to Customs Regulations .

Window gallery pop up boutique open all day for preview and viewing.

## CASINO | DECK 7

Closed due to Customs Regulations

*Age restriction: over 18 to use the facilities.*

## SHORE CONCIERGE DESK | DECK 5

Dial 551 for assistance

during daily opening hours.

7:30 a.m. – 10:30 a.m. | 4:00 p.m. – 7:00 p.m.

## GUEST RELATIONS MANAGER | DECK 5

Dial 60502 for assistance.

8:00 a.m. – 12:00 p.m. | 4:00 p.m. – 8:00 p.m.

## MEDICAL CENTRE | DECK 3

Dial 10333 during clinic hours.

8:00 a.m. – 9:00 a.m. | 5:00 p.m. – 6:00 p.m.

Medical assistance is also available by appointment.

Dial 555 (Reception) after hours.

*Emergency service is available 24 hours a day.*

*Please use the Forward elevator or Forward stairs to reach the clinic.*

Kindly ask about charges prior to consultation.

**IN THE EVENT OF AN EMERGENCY PLEASE DIAL 999**

# Wednesday, 23 April 2025

Sunrise 5:45 a.m. • Sunset 8:32 p.m.

## MORNING ACTIVITIES

7:00	Morning Stretch (sign up required)	Fitness Centre (6)
8:00	<b>Silver Dawn is scheduled to dock in Copenhagen, Denmark</b> Once the vessel has been cleared by local authorities, Cruise Director Moss will give weather and gangway location information (Clearance announcements are broadcast on the Bridge camera channel on your suite television)	
8:00	Pure form Yoga (sign up required)	Fitness Centre (6)
9:00	Today's Silver Quiz, Crossword Puzzle and Sudoku are available (Return the Silver Quiz to Reception by 3:00 pm - prize points for the most accurate quiz that is returned earliest)	Arts Café (8)
9:00	Board games will be available for your enjoyment (unhosted)	Observation Lounge (11)
9:00	Shuffleboard will be set up for your enjoyment throughout the day (unhosted) * weather permitting	Outside Panorama Lounge (9)
9:00	Table Tennis will be available for your enjoyment (unhosted) * weather permitting	Outside Panorama Lounge (9)
9:00	Cornhole will be available to play * weather permitting	Outside Panorama Lounge (9)
9:00	Complimentary massage taster	OTIVM Spa (6)
9:30	Knit and Stitch Club: meet with fellow knitters and stitchers (unhosted, no material provided)	Observation Lounge (11)
10:15	Come and admire our Cartier sunglasses display. Window gallery all day for preview and viewing .	Boutique (8)
10:45	Shuffleboard Tournament: Join your Entertainment Cruise Staff for this daytime activity * weather permitting	Outside Panorama Lounge (9)

## AFTERNOON ACTIVITIES

2:00	<b>S.A.L.T. Lab Class: "The Joy of Berries: Wild Nordic Fruit and the Taste of Summer"</b> (please pre-register with guest services)	S.A.L.T. Lab (4)
2:30	Relieve back, foot and leg pain	Fitness Centre (6)
3:00	Facial Rejuvenation walk-in clinic with Dr. Marco	OTIVM Spa (6)
3:00	Table Tennis Tournament: Join your Entertainment Cruise Staff for this daytime activity * weather permitting	Outside Panorama Lounge (9)
3:30	Acupuncture walk-in clinic with Dr. Liliana Grande (complimentary consultation)	OTIVM Spa (6)
4:00	<b>Bingo!</b> with a member of the Entertainment Cruise Staff	Panorama Lounge (9)
4:45	<b>Team Trivia</b> - Join Cruise Director Moss for this daytime activity	Dolce Vita (5)
5:00	Catholic Mass with Father Adam	Silver Note (7)
5:30	Golf Putting Competition: Join your Entertainment Cruise Staff for this daytime activity	Lobby (4)

## EVENING ACTIVITIES

## DRESS CODE: ELEGANT CASUAL

6:00	Pianist Remon and Guitar Entertainer Felipe alternate performing for guests' listening pleasure	Dolce Vita (5)
6:15	Silver Dawn Band plays for your dancing and listening pleasure	Panorama Lounge (9)
6:30	Solo Travellers get together with your Gentlemen Hosts Jeff	Panorama Lounge (9)
7:30	Jazz Pianist André plays for guests' listening pleasure	Silver Note (7)
8:15	Join Silver Note Jazz Duo Esther and André as they entertain you with their live music	Silver Note (7)
9:00	Pianist Remon performs for guests' listening pleasure	Dolce Vita (5)
9:15	<b>Showtime!</b> Silversea Proudly Presents: <b>35mm Blockbuster</b> From the soundtracks of some of the world's biggest movies, we present a selection of your favourite hit songs. Memorable movies, with unforgettable music, featuring our Silversea singers and dancers, with the Silver Dawn live band.	Venetian Lounge (5)
10:30	DJ Gabor invites you to a party to celebrate the songs you love (until late)	Panorama Lounge (9)

## SHIP PROCEDURES

Remember to carry your **Suite Key Card** whenever going ashore as this is your only valid identification for reboarding the vessel.

## PIER INFORMATION

*Silver Dawn* is scheduled to docked in  
Copenhagen, Denmark  
Langelinie, Berth 197 North End.

## IMPORTANT NOTICE

Silversea charges in United States Dollars for all shipboard transactions. We would like you to be aware that your credit card company may charge a foreign transaction fee. Silversea processes shipboard credit card transactions through the United Kingdom. Should you wish to register a different credit card to settle your account, please see our Reception Staff on Deck 5.

## CURRENCY EXCHANGE

The local currency is Danish Krone (DKK). Guests going ashore can expect the following rates of exchange:

**1 USD = 6.48 DKK approx.**

**1 GBP = 8.67 DKK approx.**

**1 EUR = 7.46 DKK approx.**

## SHIP'S AGENT

(for use in emergencies only)

Sdk Cruise

24/7 Hotline: +45 3344 1710

Email: Denmark@sdkcruise.com

# Overnight Stay

# Going ashore in Copenhagen, Denmark

## EXCURSIONS

The excursions depart at the times listed below from the pier ashore. As a courtesy to your fellow guests and to allow the punctual departure of your excursion, we ask all participants to proceed ashore **10 minutes** prior to your departure time.

If you are late, unfortunately the transportation will not wait.

**Please do not forget to bring your excursion tickets and Suite Key Card.**

CPH-G	FAIRYTALE CASTLES & COUNTRYSIDE .....	8:30 a.m.
CPH-R	1ST DEP: WONDERFUL COPENHAGEN & TIVOLI .....	9:30 a.m.
CPH-E	ROYAL TREASURES, CASTLE & CITY .....	10:00 a.m.
CPH-H	COPENHAGEN CYCLING & DANISH SPECIALITIES .....	10:15 a.m.

## AFTERNOON TOURS

CPH-IB	1ST DEP: EVENING CRUISE WITH WINE & CANAPES .....	4:30 p.m.
--------	---	-----------

## EVENING TOURS

CPH-I	2ND DEP: EVENING CRUISE WITH WINE & CANAPES .....	6:00 p.m.
CPH-IA	3RD DEP: EVENING CRUISE WITH WINE & CANAPES .....	7:45 p.m.

## HOSPITALITY DESK ON BOARD

There will be a local Hospitality Desk Representative on board upon arrival for 2 hours this morning at the Shore Concierge Desk (Deck 5). The representative will be able to answer detailed questions and to direct guests to their desired locations. Complimentary brochures and maps may also be available.

## SHUTTLE BUS

A complimentary Shuttle Bus Service will be operating between the Pier and Holmens Kanal 5 (Kings Square) 9:00 a.m. until 9:30 p.m. (last bus from town). We recommend arriving at least 10 minutes prior to the shuttle bus departure at the pickup locations. Shuttle bus schedule will be posted at the Shore Concierge Desk, Deck 5 and at the gangway.

## VESSEL GENERAL PERMIT

Silversea is committed to protecting the environment and has a responsibility to ensure that the waterways on which it sails on are not polluted by the fleet. Therefore, we ask for your cooperation in helping us to enforce this policy. Please do not throw anything overboard at any time and minimize the usage of water. Be mindful of detergents and soaps used onboard. May we request that you use water sensibly by turning off faucets / taps and showers and do not allow them to run continuously. Please report any possible situations that could cause pollution to the seas to the Reception Desk on Deck 5 or by calling 555 on any of the ship's telephones. Thank you for your cooperation.

**PLEASE NOTE THIS USEFUL INFORMATION WHEN GOING ASHORE.**

**SILVER DAWN SATELLITE PHONE NUMBER: +1 786 605 5750**