

Chronicles

News and Information for all onboard events

SATURDAY, 5 APRIL 2025

BILBAO, SPAIN

Arrival: 9:00 a.m.

All Aboard: 10:30 p.m.

Departure: 11:00 p.m.

DRESS CODE: ELEGANT CASUAL

Ladies: trousers, blouses, skirts, or casual dresses.

Gents: open-collar shirts and slacks, jacket optional.

No jeans, shorts or flip flop type footwear after 6:00 P.M.
in indoor venues.

TODAY'S WEATHER

Mostly cloudy

High: 66°F 19°C

Low: 53°F 11°C



BILBAO, SPAIN

Aboard Silver Dawn

PLAN AHEAD

Upcoming ports



DATE	PORT	ARRIVE	DEPART
6 April	Bordeaux	3:45 p.m.	-
7 April	Bordeaux	-	-
8 April	Bordeaux	-	5:00 p.m.

YOUR EXPERIENCES ASHORE

SHORE EXCURSION SUGGESTIONS

Enhance your voyage with our exceptional excursions. From day excursions or private arrangements, we offer you the world. Please visit the Shore Concierge Desk to discuss your options and reserve your excursions. If you prefer, you may request your excursions via MyCruise on you in-suite TV or by completing the Excursion Booking Form in your suite. Your butler will be pleased to deliver this if completed by our deadline.

BOD-012 / Refined Lalique & Sauterne Wine

3.50 Hours | \$239

Arrive at Château Lafaurie-Peyraguey, a first Classified growth of Sauternes, for a visit followed by a tasting of 3 wines of the estate.

2018 marked the opening of the new Lalique hotel and restaurant at Château Lafaurie-Peyraguey. You will be explained the special link that unites their wines to the art of Lalique.

DECK 5 EXT. 551

OPENING HOURS:

7:30 A.M. - 10:30 A.M. | 4:00 P.M. - 7:00 P.M.



BILBAO, SPAIN

The capital of leisure in Galicia

Whether it's the flow of its boundary pushing architecture, delights of its finger food tapas, or sweeps of gorgeous shoreline nearby, Bilbao is a city that places a premium on aesthetics. The relentless drive to all things beautiful may be a reaction to the city's industrial past, but it has led this Basque city to emerge as a new beacon of artistry. American architect Frank Gehry's masterpiece of flowing metal is the shining standout here, a perfect harmony of smooth titanium and glass, and a thrilling piece in itself. Inside the Guggenheim Museum Bilbao, world-class exhibitions are exhibited in the bright, expansive interior - which practically begs you to explore more.

The city has gorgeous historical presence too. Casco Viejo - the medieval area - is its historic core, and home to the original seven streets and cathedral, dating back to the 14th century. Tall banks of coloured buildings rise either side as you walk, dwarfed by a tide of pretty facades, overflowing flower boxes, and intricate rail balconies. Plaza Nueva is Bilbao's neoclassical square, with a procession of arches all around you. Morning flea markets regularly overtake it, offering opportunities to pick through piles of coins, dusty books and rusted antiques on the hunt for bargains, in this most elegant setting.

The titanic Mercado de la Ribera market looms tall by the river. Explore to eat your way through an endless pile of Basque pintxos - the local take on tapas. Cocktail sticks will quickly stack up as you gorge on plump olives, organic cheeses, and feather thin slices of curled hams, while orbiting Europe's largest covered market. Described as a perfect blend of beauty and function by UNESCO, the Vizcaya Bridge is an unusual but spectacular piece of industrial architecture. The world's oldest, gigantic transporter crane is still in use today, swinging cars and passengers from one side of the gaping Nervion River's mouth to the other.

SIGHTS

- Guggenheim Museum Bilbao
- Azkuna Zentroa Alhóndiga
- Bilbao
- Museum of Fine Arts of Bilbao
- Plaza Nueva
- Bilboko Donejakue katedrala
- Erribera Merkatua
- Begoñako Basilika
- Casilda Iturrizar Parkea
- Teatro Arriaga
- Bilboko Itsas Museoa
- Zubizuri Bridge
- Puppy Sculpture

SHOPPING AND CUISINE

Bilbao's main commercial street, Gran Vía, is part of The Ensanche, a stylish and cosmopolitan district, noted for its eclecticism. It is clearly the city's zone with most shops and stores. A first-rate shopping district, where you will find everything you are looking for. Location: Gran Vía de Don Diego López de Haro. Zubiarte Shopping Mall: Zubiarte is a unique urban shopping center in central Bilbao. This impressive brick, stone and glass shopping centre was designed by US architect Robert Stern, and has been recently remodeled. It is composed by different buildings connected through gangways and staircases. Inside, there are more than 75 stores for fashion, accessories, sports, perfumes... Also, it includes 8 cinemas, a supermarket and a wide variety of restaurants.

THERMAGE CPT

SKIN TIGHTENING THERAPY

THE OTIVM BEAUTY SPA
DECK 6

Thermage CPT is the premier non-invasive, skin-tightening therapy that uses radio frequency to improve the appearance of sagging or loose skin on the face and body. Tighten and contour in just one treatment.

RESPOKE

GET FASHION THAT FEELS GOOD WITH RESPOKE

THE BOUTIQUE
DECK 8

Discover chic fashion accessories made from beautiful silk scarves by some of fashion's greatest designers. All are made with natural fibers and environmentally friendly materials (and no leather); plus, Respoke pays a fair wage to its craftspeople, who work in family owned workshops.



DRESS CODE

SILVERSEA OPERATES AN ONBOARD DRESS CODE AFTER 6:00 P.M.

When, during the day, casual wear is suitable, akin to standard sports outfits found at five-star resorts, evening wear falls into two categories:

ELEGANT CASUAL

On casual evenings, ladies may opt for trousers, blouses, skirts, or casual dresses. Gentlemen can wear open-collar shirts and slacks. A jacket is optional.

FORMAL OPTIONAL

On Formal Optional nights, ladies may choose a more formal attire such as an evening gown or cocktail dress. Gentlemen may opt for a tuxedo, dinner jacket, or dark suit with a tie. Alternatively, guests are welcome to adhere to the Elegant Casual dress code, with the difference that gentlemen must wear a jacket in all indoor spaces.



REGARDLESS OF THE DAILY DRESS CODE:

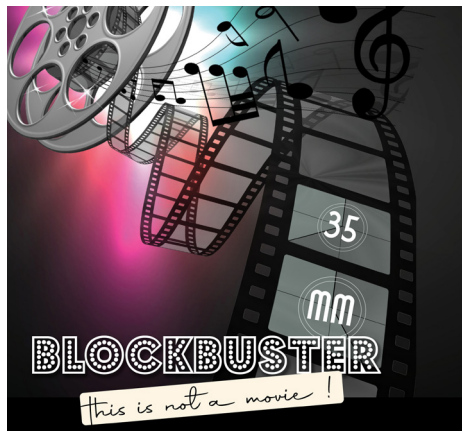
- After 6 pm, indoor spaces prohibit jeans, shorts, hats, caps, sneakers, or flip-flop-type footwear.
- Casual wear is always suitable in outdoor venues.
- Gentlemen dining at La Dame are required to wear a jacket.

35MM BLOCKBUSTER

TONIGHT'S SHOW

AT 9:15 P.M.
VENETIAN LOUNGE, DECK 5

From the soundtracks of some of the world's biggest movies, we present a selection of your favourite hit songs. Memorable movies, with unforgettable music, featuring our Silversea singers and dancers, with the Silver Dawn live band.



OTIVM

THE ORIGINAL ART OF COMFORT

SAVE UP TO \$4,500

For a limited time, you can save up to \$4,500 plus an additional \$500 shipboard credit for a combined value of up to \$5,000 per suite*. This combined offer is exclusively available on our all-inclusive fares, featuring over 700 voyages – departing early 2025 through 2027. To disconnect, reinventing, and having every reason to celebrate. To Finding More.

To take advantage of this limited-time offer, book your suite with just a 15% deposit by May 31, 2025.

Book onboard and combine this amazing offer with exclusive onboard savings!



For more information, please contact your Future Cruise Team Barrie and Lauren on Deck 5, or extension 60515.

FIND THE WI-FI PACKAGE THAT MEETS YOUR NEEDS

Complimentary Standard Internet access is offered to all guests. For those desiring an elevated online experience, Premium Wi-Fi with unlimited access is available for purchase.

For assistance, please contact the Reception Desk.

	PREMIUM WI-FI	STANDARD WI-FI
BROWSE	✓	✓
MESSAGE	✓	✓
EMAIL	✓	✓
POST	✓	—
VOICE CALL	✓	—
VIDEO CHAT	✓	—
STREAM	✓	—



ALL DAY DINING

BREAKFAST

ATLANTIDE (DECK 4)

À la Carte 8:00 a.m. – Last Seating 9:30 a.m.

LA TERRAZZA (DECK 7)

Buffet 7:00 a.m. – 10:00 a.m.

LUNCH

ATLANTIDE (DECK 4)

À la Carte 12:00 p.m. – Last Seating 1:30 p.m.

KAISEKI (DECK 4)

À la Carte 12:00 p.m. – Last Seating 2:30 p.m.

LA TERRAZZA (DECK 7)

Buffet 12:00 p.m. – 2:00 p.m.

THE GRILL (DECK 10) *

À la Carte 12:00 p.m. – Last Seating 3:30 p.m.

OPEN ALL DAY

ARTS CAFÉ (DECK 8)

Light Snacks 6:30 a.m. – 11:00 p.m.

SPACCANAPOLI (DECK 11)

À la Carte 11:00 a.m. – 11:00 p.m.

* Weather permitting

** Reservations required

DINNER

As a courtesy to your fellow guests please respect the times of your dinner reservation.

ATLANTIDE (DECK 4)

À la Carte 6:00 p.m. – Last Seating 8:30 p.m.

S.A.L.T. Kitchen (DECK 4)

À la Carte 6:30 p.m. – Last Seating 9:00 p.m.

KAISEKI (DECK 4) **

À la Carte 6:30 p.m. – Last Seating 9:00 p.m.

A dining fee per person applies

LA TERRAZZA (DECK 7) **

À la Carte 6:30 p.m. – Last Seating 9:00 p.m.

SILVER NOTE (DECK 7) **

À la Carte 7:30 p.m. – Last Seating 10:00 p.m.

THE GRILL (DECK 10) */**

À la Carte 6:30 p.m. – Last Seating 9:00 p.m.

LA DAME (DECK 8) **

À la Carte 6:30 p.m. – Last Seating 9:00 p.m.

Gentlemen: Jacket required

A dining fee per person applies

Should you wish to cancel your reservation at La Dame, please note that you must do so by latest 2:00pm on the day of the reservation, otherwise the full cover fee per person will be billed to your Guest Account.

IN-SUITE DINING

24-hour

The menu is available on the TV.

To place your order please contact your butler or call extension 500. In-Suite Dining is also available in other public areas when our dining venues are not open for service.

BAR HOURS

9:00am – 10:30pm

10:00am – until late

2:00pm – until late

6:00pm – until late

6:30am – until late

6:00pm – 11:00pm

7:00pm – until late

9:00pm – until late

Pool Bar * [Deck 10]

Panorama Lounge [Deck 9]

Dolce Vita [Deck 5]

S.A.L.T. Bar [Deck 4]

Arts Café [Deck 8]

Observation Library [Deck 11]

Silver Note [Deck 7]

Connoisseur's Corner [Deck 9]

*Weather permitting

At Silversea Cruises, we take maximum food precautionary measures to ensure the safest quality product is offered to our guests; Worldwide Public Health Services advise that consuming raw or undercooked meats, seafood, shellfish, eggs, milk, or poultry may increase your risk of food-borne illness, especially if you have certain medical conditions.

HAND WASHING & HAND SANITIZING

Keeping hands clean through improved hand hygiene is one of the most important steps we can take to avoid getting sick and spreading germs to others. Many diseases and conditions are spread by not washing hands with soap and clean, running water. Alcohol-based hand sanitizers can quickly reduce the number of germs on hands. Please use the hand sanitizers situated at the entrance door of the dining outlets and various locations around the ship.

SERVICES

OTIVM SPA | DECK 6

BEAUTY SALON AND BARBER SHOP

Dial 600 for appointments.

8:00 a.m. – 8:00 p.m.

Later appointments until 10:00 p.m.

available on request.

SAUNA & STEAM ROOM | DECK 6

8:00 a.m. – 8:00 p.m.

FITNESS CENTRE | DECK 6

5:00 a.m. – 10:00 p.m.

Limited spaces available for classes.

Age restriction: over 18 to use the

facilities. 16–18 allowed in with guardian.

FUTURE CRUISE SALES | DECK 5

Please dial 60515 or consult your suite ITV to request an appointment.

8:00 a.m. – 11:00 a.m. | 2:00 p.m. – 6:00 p.m.

BOUTIQUES | DECK 8

Closed due to Customs Regulations.

Window gallery pop up boutique

open all day for preview and viewing.

CASINO | DECK 7

Closed due to Customs Regulations

Age restriction: over 18 to use the facilities.

SHORE CONCIERGE DESK | DECK 5

Dial 551 for assistance

during daily opening hours.

7:30 a.m. – 10:30 a.m. | 4:00 p.m. – 7:00 p.m.

GUEST RELATIONS MANAGER | DECK 5

Dial 60502 for assistance.

8:00 a.m. – 12:00 p.m. | 4:00 p.m. – 8:00 p.m.

MEDICAL CENTRE | DECK 3

Dial 10333 during clinic hours.

8:00 a.m. – 9:00 a.m. | 5:00 p.m. – 6:00 p.m.

Medical assistance is also available by appointment.

Dial 555 (Reception) after hours.

Emergency service is available 24 hours a day.

Please use the Forward elevator or Forward stairs to reach the clinic.

Kindly ask about charges prior to consultation.

**IN THE EVENT OF AN
EMERGENCY PLEASE DIAL 999**

Saturday, 5 April 2025

Sunrise 7:46 a.m. • Sunset 8:43 p.m.

MORNING ACTIVITIES

7:00	Fab Abs (sign up required)	Fitness Centre (6)
8:00	Pure Form Pilates (sign up required)	Fitness Centre (6)
9:00	Silver Dawn is scheduled to dock in Bilbao, Spain Once the vessel has been cleared by local authorities, Cruise Director Moss will give weather and gangway location information (Clearance announcements are broadcast on the Bridge camera channel on your suite television)	
9:00	Complimentary massage taster	OTIVM Spa (6)
9:00	Today's Silver Quiz, Crossword Puzzle and Sudoku are available (Return the Silver Quiz to Reception by 3:00 pm - prize points for the most accurate quiz that is returned earliest)	Arts Café (8)
9:00	Board games will be available for your enjoyment (unhosted)	Observation Lounge (11)
9:00	Shuffleboard will be set up for your enjoyment throughout the day (unhosted) * weather permitting	Outside Panorama Lounge (9)
9:00	Cornhole will be available to play (unhosted) * weather permitting	Outside Panorama Lounge (9)
9:00	Table Tennis will be available for your enjoyment (unhosted) * weather permitting	Outside Panorama Lounge (9)
9:30	Knit and Stitch Club: meet with fellow knitters and stitchers (unhosted, no material provided)	Observation Lounge (11)
10:00	On Sale Respoke: get fashion that feels good with Respoke: discover chic fashion accessories made from beautiful silk scarves by some of fashion's greatest designers. Window pop up open all day for preview and viewing	Boutique (8)
10:00	Wrinkle remedies with Dr. Marco	OTIVM Spa (6)
11:15	Shuffleboard Tournament: Join your Entertainment Cruise Staff for this daytime activity * weather permitting	Outside Panorama Lounge (9)

AFTERNOON ACTIVITIES

2:00	S.A.L.T. Lab Class: "Pintxos: The Basque Obsession with Tiny Cuisine" (please pre-register with guest services)	S.A.L.T. Lab (4)
3:00	Table Tennis Tournament: Join your Entertainment Cruise Staff for this daytime activity * weather permitting	Outside Panorama Lounge (9)
3:30	Arthritis & back pain solution with Dr. Liliana Grande	OTIVM Spa (6)
4:00	Enrichment Lecture with John Penycate: Deception in World War II - With the declassification of intelligence files, some of the most fascinating details about how the allies fought World War II have only emerged in recent decades. Using the latest findings, John looks at one key aspect: how Hitler was duped into misjudging allied strategy, particularly around D-Day, and how deceiving him was a war-winner.	Venetian Lounge (5)
4:00	Bingo! with a member of the Entertainment Cruise Staff	Panorama Lounge (9)
4:00	Restore facial contour with Dr. Marco	OTIVM Spa (6)
4:45	Team Trivia - Join Cruise Director Moss for this daytime activity	Dolce Vita (5)
5:00	Catholic Mass with Father Adam	Silver Note (7)
5:30	Golf Putting Competition: Join your Entertainment Cruise Staff for this daytime activity	Lobby (4)

EVENING ACTIVITIES

DRESS CODE: ELEGANT CASUAL

6:00	Guitar Entertainer Felipe performs for guests' listening pleasure	Dolce Vita (5)
6:15	Silver Dawn Band plays for your dancing and listening pleasure	Panorama Lounge (9)
6:30	Solo Travellers get together with your Gentlemen Hosts Jeff and Jeffrey	Panorama Lounge (9)
7:30	Jazz Pianist André plays for guests' listening pleasure	Silver Note (7)
8:15	Join Silver Note Jazz Duo Esther and André as they entertain you with their live music	Silver Note (7)
9:00	Pianist Remon performs for guests' listening pleasure	Dolce Vita (5)
9:15	Showtime! Silversea Proudly Presents: 35mm Blockbuster From the soundtracks of some of the world's biggest movies, we present a selection of your favourite hit songs. Memorable movies, with unforgettable music, featuring our Silversea singers and dancers, with the Silver Dawn live band.	Venetian Lounge (5)
10:15	DJ Gabor invites you to a party to celebrate the songs you love (until late)	Panorama Lounge (9)
10:30	All Aboard! Silver Dawn prepares to sail	
11:00	Silver Dawn sails for Bordeaux, France	

SHIP PROCEDURES

Remember to carry your **Suite Key Card** whenever going ashore as this is your only valid identification for reboarding the vessel

PIER INFORMATION

Silver Dawn is docked in Getxo 1

IMPORTANT NOTICE

Silversea charges in United States Dollars for all shipboard transactions. We would like you to be aware that your credit card company may charge a foreign transaction fee. Silversea processes shipboard credit card transactions through the United Kingdom. Should you wish to register a different credit card to settle your account, please see our Reception Staff on Deck 5.

CURRENCY EXCHANGE

The local currency is the Euro (EUR). Guests going ashore can expect the following rates of exchange:

1 USD = 0.90 EUR approx.

1 GBP = 1.18 EUR approx.

SHIP'S AGENT

(for use in emergencies only)

NOATUM MARITIME SPAIN S.A.

Phone: +34 630 02 48 24

Email: opsesbio@marmedsa.com; cruises@

marmedsa.com

Going ashore in Bilbao, *Spain*

EXCURSIONS

The excursions depart at the times listed below from the pier ashore. As a courtesy to your fellow guests and to allow the punctual departure of your excursion, we ask all participants to proceed ashore **10 minutes** prior to your departure time. If you are late, unfortunately the transportation will not wait.

Please do not forget to bring your excursion tickets and Suite Key Card.

BIO-AA	1ST DEP: BILBAO & GUGGENHEIM MUSEUM.....	9:30 a.m.
BIO-DA	BASQUE HIKING.....	9:30 a.m.
BIO-NA	1ST DEP: SCENIC BASQUE COAST.....	10:00 a.m.
BIO-B	GUERNICA & BASQUE COAST.....	10:00 a.m.
BIO-F	SAN SEBASTIAN.....	10:00 a.m.
BIO-O	1ST DEP: SNAPSHOT OF BILBAO.....	10:30 a.m.
BIO-OA	2ND DEP: SNAPSHOT OF BILBAO.....	2:00 p.m.
BIO-NB	2ND DEP: SCENIC BASQUE COAST.....	2:00 p.m.
BIO-AB	2ND DEP: BILBAO & GUGGENHEIM MUSEUM.....	2:30 p.m.

HOSPITALITY DESK ON BOARD

There will be a local Hospitality Desk Representative on board upon arrival for 2 hours this morning at the Shore Concierge Desk (Deck 5). The representative will be able to answer detailed questions and to direct guests to their desired locations. Complimentary brochures and maps may also be available.

Please note: Siesta time, shops might close for few hours in the afternoon.

SHUTTLE BUS

A complimentary Shuttle Bus Service will be operating between the pier and Palacio Euskalduna from 9:30 a.m. until 9:00 p.m. (last bus from town). Distance to Palacio Euskalduna: approximately a 30-minute drive (one way). We recommend arriving at least 10 minutes prior to the shuttle bus departure at the pickup locations. Shuttle bus schedule will be posted at the Shore Concierge Desk, Deck 5 and at the gangway.

HAND WASHING & HAND SANITIZING

Keeping hands clean through improved hand hygiene is one of the most important steps we can take to avoid getting sick and spreading germs to others. Many diseases and conditions are spread by not washing hands with soap and clean, running water. Alcohol-based hand sanitizers can quickly reduce the number of germs on hands. Please use the hand sanitizers situated at the entrance door of the dining outlets and various locations around the ship.

SPANISH VAT - VALUE ADDED TAX

Today in Bilbao 05 April, Spanish Value-Added Tax will be applied to all food & beverage items sold. Following tax rate will apply:

Food and Alcoholic Beverages: 10%

Specialty Restaurant: 10%

All Aboard
10:30 p.m.

PLEASE NOTE THIS USEFUL INFORMATION WHEN GOING ASHORE.

SILVER DAWN SATELLITE PHONE NUMBER: +1 786 605 5750