

Chronicles

News and Information for all onboard events

WEDNESDAY, 7 MAY 2025

EN ROUTE TO TÓRSHAVN,
FAROE ISLANDS

DRESS CODE: FORMAL OPTIONAL

Ladies: evening gown or cocktail dress.

Gents: tuxedo, dinner jacket, or dark suit with a tie.

Guests can adhere to the Elegant Casual dress code, but men must wear a jacket in all indoor spaces.

TODAY'S WEATHER

Partly Cloudy

High: 57°F 14°C

Low: 40°F 4°C



TIME CHANGE



Please turn your clocks
ONE HOUR BACK
during the night
between 7 and 8 May.

AT SEA

Aboard Silver Dawn

ANTARCTICA

A TRAVEL ADVENTURE WELL BEYOND WORDS

9:30 A.M.
VENETIAN LOUNGE, DECK 5

Seen only by wildlife until 1820, Antarctica and its surrounding polar islands remain one of Earth's least accessible – and most breathtaking – realms. Make your next Silversea journey an unparalleled adventure that reaches far beyond any beaten track, but nowhere near the limits of our expedition excellence. Join your Future Cruise Manager, Barrie for an informative talk to learn more about our expedition fleet, our immersive itineraries, and our Antarctica Bridge Fly & Cruise programme.



OPALS

DAZZLING & MESMERISING

2:45 P.M.
THE BOUTIQUE, DECK 8

Celebrated as Australia's national gemstone, the black, white, and boulder opal are regarded as some of the most desirable gemstones in the world. Opals are sourced from a number of different locations including Mexico, Brazil, and Africa, and have been treasured by jewellery collectors for years. Visit the Boutique to learn more about these beautifully unique and colourful gems.

All Hubert designs are tax and duty-free and exempt from US customs charges. Enquire in-store for details. View our collection in the Boutique today.

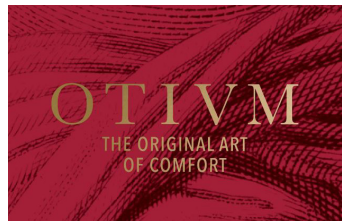


MEDISPA COSMETIC TREATMENTS

REVITALISE YOUR APPEARANCE

THE OTIVM BEAUTY SPA
DECK 6

Unlock the secret to a more youthful looking skin and body with our safe and effective cosmetic treatments available onboard. Revitalize your appearance in minutes with little, if any, downtime. The result: a renewed you. Contact the spa for a complimentary consultation.

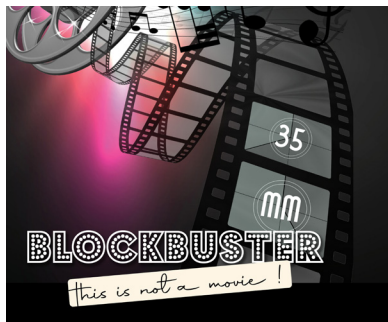


35MM BLOCKBUSTER

TONIGHT'S SHOW

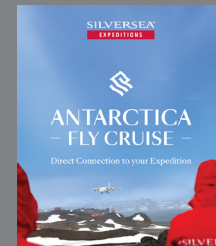
9:30 P.M.
VENETIAN LOUNGE, DECK 5

From the soundtracks of some of the world's biggest movies, we present a selection of your favourite hit songs. Memorable movies, with unforgettable music, featuring our Silversea singers and dancers, with the *Silver Dawn* live band.



ANTARCTICA FLY CRUISE

Here's to finding the edge of your comfort zone at the edge of the Earth on a once-in-a-lifetime voyage to Antarctica. Starting January 2026, guests embarking on an Antarctica Fly Cruise will begin their Expedition with the signature Silversea hospitality – at The Cormorant at 55 SouthSM. Skip The Drake Passage and fly directly to The Last Continent. Expedition Leaders take you down untrodden paths, deep into the Antarctic Wilderness, where silence and awe are etched in wild beauty. Uncover the wonders of Antarctica that most miss, following your curiosity to the edge of the earth, and embracing the joy of untouched beauty. To Finding More. Book onboard and receive exclusive onboard savings!



For more information, please contact your Future Cruise Team Barrie and Lauren on Deck 5, or extension 80509 or 60515.

BLACKJACK TOURNAMENT

CASINO ON BOARD SILVERSEA



4:30 P.M.
CASINO, DECK 7

Come to the Casino and join our Blackjack Tournament. Visit the Casino on board and try your championship skills! Whether you are a new player or a Blackjack veteran, taking part in Blackjack Tournaments can be a lot of fun! What makes tournaments popular is the competition among players. Unlike traditional Blackjack, where it is you against the dealer, in tournament play it is a player against player. An entry fee is applicable. Please ask our Casino Staff for more information. Have fun and good luck!

Wednesday, 7 May 2025

Sunrise 5:26 a.m. • Sunset 10:31 p.m.

MORNING ACTIVITIES

7:00	Morning Stretch (<i>sign up required</i>)	Fitness Centre (6)
8:00	Pure form Yoga (<i>sign up required</i>)	Fitness Centre (6)
8:30	Walking Club with Cruise Director Moss (<i>weather permitting</i>)	Spaccanapoli (11)
9:00	Shuffleboard will be set up for your enjoyment throughout the day (<i>weather permitting</i>)	Outside Panorama Lounge (9)
9:00	Today's Silver Quiz, Crossword Puzzle, and Sudoku are available (<i>Return the Silver Quiz to Reception by 3:00 p.m. - prize points for the most accurate quiz that is returned earliest</i>)	Arts Café (8)
9:00	Complimentay Massage Taster	OTIVM Spa (6)
9:00	Board games will be available for your enjoyment	Observation Lounge (11)
9:00	Table Tennis will be available for your enjoyment (<i>weather permitting</i>)	Outside Panorama Lounge (9)
9:00	Cornhole will be available to play (<i>weather permitting</i>)	Outside Panorama Lounge (9)
9:30	Future Cruise Talk: Antarctica with your Future Cruise Manager Barrie Dodgson	Venetian Lounge (5)
9:30	Knit and Stitch Club: meet with fellow knitters and stitchers (<i>no material provided</i>)	Observation Lounge (11)
10:00	S.A.L.T. Lab Class: "Understanding New Nordic Cuisine" (<i>please pre-register with guest services</i>)	S.A.L.T. Lab (4)
10:00	Bridge Beginners Lesson with your Bridge Instructors Joe and Marilyn	S.A.L.T. Kitchen (4)
10:00	Facial Rejuvenation walk-in clinic with Dr. Marco (<i>complimentary consultation</i>)	OTIVM Spa (6)
10:00	Treasure Hunt with your Entertainment Cruise Staff	Dolce Vita (5)
10:15	Destination Lecture with Dr. Glenn E. Robinson: Tranquil Tórshavn The lovely capital of the Faroe Islands, Havn (as it is known locally) is a modern artifact of Denmark's colonial past	Venetian Lounge (5)
10:30	Acupuncture walk-in clinic (<i>complimentary consultation</i>)	OTIVM Spa (6)
10:45	Shuffleboard Tournament: Join your Entertainment Cruise Staff and Officers for this daytime activity (<i>weather permitting</i>)	Outside Panorama Lounge (9)
11:00	Intermediate Bridge Lesson with your instructors Joe and Marilyn	S.A.L.T. Kitchen (4)
11:00	Coffee Chat with your Entertainment Cruise Staff	Dolce Vita (5)
11:00	Fitness Seminar: Detox for Health and Weight Loss	OTIVM Spa (6)
11:00	Mahjong Open session with fellow guest Reeva (<i>supervised</i>)	S.A.L.T. Kitchen (4)
11:15	Travia Travel Quiz: Faroe Islands with your Entertainment Cruise Staff	Panorama Lounge (9)
11:15	Cooking Demonstration with Fleet Pastry Chef Regis Monges	Venetian Lounge (5)
11:15	Boutique Special: Silversea Logo - collection of clothing & accessories available today. Tax and duty free	Boutique (8)
11:30	Cocktail Demonstration by the Bar Team	Dolce Vita (5)
11:30	Cornhole Tournament: Join your Entertainment Cruise Staff and Officers for this daytime activity (<i>weather permitting</i>)	Outside Panorama Lounge (9)
11:30	Mileage Pool: Join your Entertainment Cruise Staff to guess how many miles we have travelled since Bergen	Arts Café (8)

AFTERNOON ACTIVITIES

12:00	Nautical and weather information announcement by Captain Ivo Botica	Bridge Camera Channel and Public Address System
1:30	Mahjong Beginners Lesson 4 with fellow guest Reeva (<i>supervised</i>)	S.A.L.T. Kitchen (4)
1:45	Duplicate Bridge Play with your Bridge Instructors Joe and Marilyn	S.A.L.T. Kitchen (4)
2:00	S.A.L.T. Lab Class: "Understanding New Nordic Cuisine" (<i>please pre-register with guest services</i>)	S.A.L.T. Lab (4)
2:00	Improve your posture with Goodfeet (<i>complimentary consultation</i>)	Fitness Centre (6)
2:00	Shore Concierge Briefing: Akureyri, Isafjordur, and Reykjavik with Assistant Shore Concierge Manager Mirjana Jovicic	Venetian Lounge (5)
2:00	Dance Class: Join your Gentlemen Hosts Jeff & Mike and your Silversea Dancers for this daytime activity	Panorama Lounge (9)
2:30	Arts Class with Shelley Ocana: Northern Lights - We cannot forget the splendor of the aurora borealis when we think of Norway	S.A.L.T. Kitchen (4)
2:45	Boutique Special: Hubert - Opal Natures Fingerprints The Bedouins believed that Opals contained lightning and fell from the sky during thunderstorms, the Romans thought it was the most precious and powerful Gem of all. Known for its unique display of flashing rainbow colors. Join your Professional Gemologists Terry and Veni in the Boutique	Boutique (8)
3:00	Enrichment Lecture with Pieter de Vries: Inside Titanic - brass beds, bowler hats & bathtubs Pieter's teamwork with James Cameron continues as their remote cameras unveil Titanic's most intimate secrets	Venetian Lounge (5)
3:00	Table Tennis Tournament: Join your Entertainment Cruise Staff and Officers for this daytime activity (<i>weather permitting</i>)	Outside Panorama Lounge (9)
4:00	Bingo! with a member of the Entertainment Cruise Staff	Panorama Lounge (9)
4:00	Live Acupuncture Demonstration	OTIVM Spa (6)
4:30	S.A.L.T. Lab Class: "Understanding New Nordic Cuisine" (<i>please pre-register with guest services</i>)	S.A.L.T. Lab (4)
4:30	Instant Wrinkle Solutions with Dr. Marco	OTIVM Spa (6)
4:30	Blackjack Tournament with your friendly Casino Staff	Casino (7)
4:45	Team Trivia - Join Cruise Director Moss for this daytime activity	Dolce Vita (5)
5:00	Catholic Mass with Father Adam	Silver Note (7)
5:30	Golf Putting Competition: Join your Entertainment Cruise Staff for this daytime activity	Lobby (4)
5:30	Evening stretch (<i>sign up required</i>)	Fitness Centre (6)
5:45	Pianist Remon performs for guests' listening pleasure	Dolce Vita (5)

EVENING ACTIVITIES

DRESS CODE: FORMAL OPTIONAL

6:00	Guitar Entertainer Felipe plays for your listening pleasure	Panorama Lounge (9)
6:15	Solo Travellers get together with your Gentlemen Hosts Jeff and Mike	Panorama Lounge (9)
6:30	LGBTQ+ Friends get together (<i>unhosted</i>)	Panorama Lounge (9)
6:30	Friends of Bill W get together	Observation Lounge (11)
7:30	Jazz Pianist André plays for guests' listening pleasure	Silver Note (7)
8:15	Join Silver Note Jazz Duo Esther and André as they entertain you with their live music	Silver Note (7)
9:00	Pianist Remon performs for guests' listening pleasure	Dolce Vita (5)
9:30	Showtime! Silversea proudly presents: Tonight's Show - 35mm Blockbuster From the soundtracks of some of the world's biggest movies, we present a selection of your favourite hit songs Memorable movies, with unforgettable music, featuring our Silversea singers and dancers, with the <i>Silver Dawn</i> live band	Venetian Lounge (5)
10:30	DJ Gabor invites you to a party to celebrate the songs you love (<i>until late</i>)	Panorama Lounge (9)



All Day Dining

BREAKFAST

ATLANTIDE (DECK 4)

À la Carte 8:00 a.m. – Last Seating 9:30 a.m.

LA TERRAZZA (DECK 7)

Buffet 7:30 a.m. – 10:00 a.m.

LUNCH

ATLANTIDE (DECK 4)

À la Carte 12:00 p.m. – Last Seating 1:30 p.m.

KAISEKI (DECK 4)

À la Carte 12:00 p.m. – Last Seating 2:30 p.m.

LA TERRAZZA (DECK 7)

Buffet 12:00 p.m. – 2:00 p.m.

THE GRILL (DECK 10) *

À la Carte 12:00 p.m. – Last Seating 3:30 p.m.

OPEN ALL DAY

ARTS CAFÉ (DECK 8)

Light Snacks 6:30 a.m. – 11:00 p.m.

SPACCANAPOLI (DECK 11)

À la Carte 11:00 a.m. – 11:00 p.m.

* Weather permitting

** Reservations required

DINNER

As a courtesy to your fellow guests please respect the times of your dinner reservation.

ATLANTIDE (DECK 4)

À la Carte 6:00 p.m. – Last Seating 8:30 p.m.

S.A.L.T. Kitchen (DECK 4)

À la Carte 6:30 p.m. – Last Seating 9:00 p.m.

KAISEKI (DECK 4) **

À la Carte 6:30 p.m. – Last Seating 9:00 p.m.

A dining fee per person applies

LA TERRAZZA (DECK 7) **

À la Carte 6:30 p.m. – Last Seating 9:00 p.m.

SILVER NOTE (DECK 7) **

À la Carte 7:30 p.m. – Last Seating 10:00 p.m.

THE GRILL (DECK 10) */**

À la Carte 6:30 p.m. – Last Seating 9:00 p.m.

LA DAME (DECK 8) **

À la Carte 6:30 p.m. – Last Seating 9:00 p.m.

Gentlemen: Jacket required

A dining fee per person applies

Should you wish to cancel your reservation at La Dame, please note that you must do so by latest 2:00pm on the day of the reservation, otherwise the full cover fee per person will be billed to your Guest Account.

BAR HOURS

9:00 a.m. – 10:30 p.m. Pool Bar * [Deck 10]

10:00 a.m. – until late Panorama Lounge [Deck 9]

10:00 a.m. – until late Dolce Vita [Deck 5]

6:00 p.m. – until late S.A.L.T. Bar [Deck 4]

6:30 a.m. – until late Arts Café [Deck 8]

6:00 p.m. – 11:00p.m. Observation Library [Deck 11]

7:00 p.m. – until late Silver Note [Deck 7]

9:00 p.m. – until late Connoisseur's Corner [Deck 9]

*Weather permitting

IN-SUITE DINING

24-hour

The menu is available on the TV.

To place your order please contact your butler or call extension 500. In-Suite Dining is also available in other public areas when our dining venues are not open for service.

At Silversea Cruises, we take maximum food precautionary measures to ensure the safest quality product is offered to our guests; Worldwide Public Health Services advise that consuming raw or undercooked meats, seafood, shellfish, eggs, milk, or poultry may increase your risk of food-borne illness, especially if you have certain medical conditions.

STAY HEALTHY

Please help us to help you stay healthy by using Hand Sanitizer at the gangway before boarding the ship in each of the ports of call. Also take advantage of these Hand Sanitizers around the ship. Stay healthy and enjoy your cruise experience!

SERVICES

BOUTIQUE | DECK 8

10:00 a.m. – 10:00 p.m.

*Toiletries and other essential items are available for purchase upon request in the Boutique or through your Butler.
Dial 555 (Reception) for assistance.*

CASINO | DECK 7

Slots: 10:00 a.m. – until late

Tables: 4:00 p.m. – 6:00 p.m.

9:00 p.m. – until late

Age restriction: over 18 to use the facilities.

OTIVM SPA | DECK 6

BEAUTY SALON AND BARBER SHOP

Dial 600 for appointments.

8:00 a.m. – 8:00 p.m.

Later appointments until 10:00 p.m. available on request.

SAUNA & STEAM ROOM | DECK 6

8:00 a.m. – 8:00 p.m.

FITNESS CENTRE | DECK 6

5:00 a.m. – 10:00 p.m.

Limited spaces available for classes.

Age restriction: over 18 to use the facilities. 16–18 allowed in with guardian.

FUTURE CRUISE SALES | DECK 5

Please dial 60515 or 80509 or consult your suite ITV to request an appointment.

9:00 a.m. – 12:00 p.m. | 2:00 p.m. – 5:30 p.m.

SHORE CONCIERGE DESK | DECK 5

Dial 551 for assistance

during daily opening hours.

9:00 a.m. - 12:00 p.m. | 3:00 p.m. - 7:00 p.m.

GUEST RELATIONS MANAGER | DECK 5

Dial 60502 for assistance.

8:00 a.m. – 12:00 p.m. | 4:00 p.m. – 8:00 p.m.

MEDICAL CENTRE | DECK 3

Dial 10333 during clinic hours.

9:30 a.m. – 11:00 a.m. | 5:30 p.m. – 6:30 p.m.

Medical assistance is also available by appointment.

Dial 555 (Reception) after hours.

Emergency service is available 24 hours a day.

Please use the Forward elevator or Forward stairs to reach the clinic.

Kindly ask about charges prior to consultation.

**IN THE EVENT OF AN
EMERGENCY PLEASE DIAL 999**