

# Chronicles

*News and Information for all onboard events*

**SATURDAY, 24 MAY 2025**

HALIFAX, NOVA SCOTIA

**Arrival:** 8:00 a.m.

**All Aboard:** 10:30 p.m.

**Departure:** 11:00 p.m

**DRESS CODE: ELEGANT CASUAL**

Ladies: trousers, blouses, skirts, or casual dresses.

Gents: open-collar shirts and slacks, jacket optional.

No jeans, shorts or flip flop type footwear after 6:00 P.M. in indoor venues.

**TODAY'S WEATHER**

*Cloudy*

**High:** 50°F 10°C

**Low:** 45°F 7°C



## HALIFAX, NOVA SCOTIA

*Aboard Silver Dawn*

# PLAN AHEAD

## Upcoming ports



DATE	PORT	ARRIVE	DEPART
25 May	Day at Sea	-	-
26 May	Boston	6:00 a.m.	-
27 May	Boston	-	6:00 p.m.

## YOUR EXPERIENCES ASHORE

### LAST SEATS - BOOK TODAY

Don't miss the chance to make the most of your time ashore. We still have spaces available for the following tour on May 26

#### BOS-DB JFK Library & Museum 3 Hours | \$169

Depart the pier for the brief transfer to Columbia Point and tranquil Dorchester Bay; site of the striking I.M. Pei designed JFK Presidential Library and Museum.

**DECK 5 EXT. 551**  
OPENING HOURS:  
7:30 A.M. - 10:30 A.M. | 4:00 P.M. - 7:00 P.M.

## SHARING THE JOURNEY WITH OUR LEADERSHIP TEAM

Dear Guests: We are delighted to host our Senior Leadership Conference, bringing together our Fleet Captains, Hotel Directors, HR Directors, and shoreside team. You may see familiar faces and are warmly invited to enjoy spontaneous moments of connection over coffee or cocktails. We anticipate a truly exceptional journey together.

THE  
**Silversea Way**

Leadership Conference  
2025



## HALIFAX, NOVA SCOTIA

*Surrounded by natural treasures and glorious seascapes*

A city that thrives on a diet of music, outdoor events, and ocean-faring history, Nova Scotia's capital - and Atlantic Canada's largest conurbation - oozes salt-licked charm. The star-shaped fortress of Halifax citadel sits above the city, while down below, Halifax revolves around its bustling harbour. Here, jet skis skid across the water, and heritage ships jaunt out to scenic offshore islands. Music carries on the waterfront's breeze as summer's events play out, while a hefty population of pubs and restaurants provides all the space required for sitting back and relaxing. The shorefront boardwalk invites you on a gentle stroll along the waves, wandering back through Halifax's history. The Canadian Museum of Immigration waits at Pier 21 and is the doorway to a country of opportunity for so many - with over a million immigrants taking their first footsteps into Canada here. The pier's wooden boards are dotted with cafes, craft shops, and artist studios. Sail deeper into seafaring heritage at the Maritime museum. As the closest city to the sinking of the Titanic, recovered victims were transported to - and many were buried - in Halifax. The story, and items from the doomed vessel, are displayed in the museum's collection. Peggy's Cove lighthouse is nearby, and this immaculate little lighthouse is one of Canada's favourites, watching out stoically over the Atlantic's waves. With rich pickings available from its coastal location, the fruits of the sea are served up in the fryers of Halifax's varied restaurants - try seared scallops and juicy mussels. Round off any meal with a buttery blueberry grunt dessert - delicious when served up warm with a dollop of melting vanilla ice cream.

### SIGHTS

- Art Gallery of Nova Scotia
- St. Paul's Anglican Church
- Casino Nova Scotia
- Fairview Lawn Cemetery
- Halifax Public Gardens
- Maritime Museum of the Atlantic

### CUISINE

Halifax, Nova Scotia, boasts a vibrant food scene that showcases its Maritime location and rich cultural heritage. The city's culinary identity is shaped by its coastal proximity, historical influences, and local ingredients. The blend of traditional Maritime cuisine, Acadian flavors, and modern culinary innovation creates a unique and delicious dining experience in Halifax. From fresh seafood to classic dishes like donair and rappie pie, the city's food scene offers something for every palate.

# OTIVM SPA TREATMENT FOR TWO

THE MESSAGE DUET



▶ THE OTIVM BEAUTY SPA DECK 6

The Message Duet. The ultimate way to share quality time together. Both of you will enjoy a deeply relaxing 50, 75 or 100-minute massages as you lay side by side in our reserved suite for two. Warm and soothe your muscles and improve range of motion. Aromatic massage oils are both relaxing and invigorating. While providing tonic for the soul, this massage will improve the function of the circulatory, lymphatic, muscular and nervous systems. Relax your mind and body as this healing treatment relieves muscle tension, improves range of motion and releases toxins that gather in tired, overworked muscles.

## THEO FABERGÉ

BOUTIQUES ABOARD SILVERSEA

▶ THE BOUTIQUE  
DECK 8

Explore the World of Theo Fabergé, grandson of Carl Fabergé, jeweller to the Tzars of Russia, and discover incredible Creations, including stunning Egg Creations, fine jewellery and time pieces, in the onboard Boutique.

St. Petersburg Collection, Creations by Theo Fabergé are all hand made limited editions and many are catalogued in museums around the world.

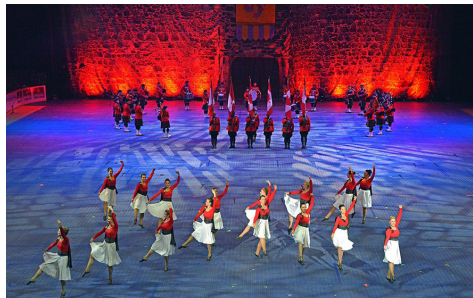


## LOCAL SHOW

TONIGHT'S SHOW WITH RCMP PIPE BAND

▶ AT 6:15 P.M.  
VENETIAN LOUNGE, DECK 5

The Royal Canadian Mounted Police (RCMP) Pipes & Drums of Nova Scotia is one of eight RCMP volunteer pipe bands located in communities across the country. The Pipes, Drums and Highland Dancers comprises volunteers from police and citizen backgrounds that come together to share and showcase their musical talent and to bring the community closer to its national police.



## MUSICAL MEMORIES

TONIGHT'S SHOW WITH  
CRUISE DIRECTOR MOSS

▶ AT 9:15 P.M.  
VENETIAN LOUNGE, DECK 5

Join your Cruise Director Moss Hills and the *Silver Dawn* Band as they perform a mixture of music to stir up some memories. With songs from Dire Straits, James Brown, Santana, Billy Joel and more.

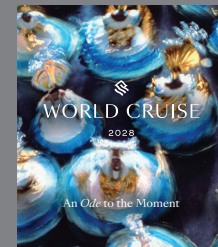
Join us for an evening of really great music, and lots of fun with Moss and the *Silver Dawn* Band. A fun night of music not to be missed!



## WORLD CRUISE 2028

MIAMI TO NICE | 132 DAYS |  
JANUARY 5 - MAY 16, 2028 |  
SILVER SHADOW

In a world that spins ever faster, slowing down is revolutionary, and this immersive odyssey seeks to defy time in pursuit of timeless on a journey free from hurry. Where you can just be. Entranced by a place, lost in a landscape, and locked into the senses. We invite you to discover the joy of life in the moment as the intimate Silver Shadow navigates five continents at a pace that reveals the pulse of each region. Secure your preferred suite today and join us on a voyage that celebrates the poetry of presence. Book onboard and receive exclusive 5% onboard savings!



▶ For more information, please contact your Future Cruise Team Barrie and Lauren on Deck 5, or extension 80509 or 60515.

## YOUR GUEST MEAL IS OUR TREAT



Enhance your dining experience with our exclusive offer at La Dame and Kaiseki. Enjoy a memorable meal with your guest on us. Savor exceptional cuisine and impeccable service, making your evening truly special. Take advantage of this 2-for-1 offer and reserve for today, 24th May. A dining fee per person applies.



## ALL DAY DINING

### BREAKFAST

ATLANTIDE (DECK 4)

À la Carte 8:00 a.m. – Last Seating 9:30 a.m.

LA TERRAZZA (DECK 7)

Buffet 7:00 a.m. – 10:00 a.m.

### LUNCH

ATLANTIDE (DECK 4)

À la Carte 12:00 p.m. – Last Seating 1:30 p.m.

KAISEKI (DECK 4)

À la Carte 12:00 p.m. – Last Seating 2:30 p.m.

LA TERRAZZA (DECK 7)

Buffet 12:00 p.m. – 2:00 p.m.

THE GRILL (DECK 10) \*

À la Carte 12:00 p.m. – Last Seating 3:30 p.m.

### OPEN ALL DAY

ARTS CAFÉ (DECK 8)

Light Snacks 6:30 a.m. – 11:00 p.m.

SPACCANAPOLI (DECK 11)

À la Carte 11:00 a.m. – 11:00 p.m.

\* Weather permitting

\*\* Reservations required

### IN-SUITE DINING

24-hour

The menu is available on the TV.

To place your order please contact your butler or call extension 500. In-Suite Dining is also available in other public areas when our dining venues are not open for service.

At Silversea Cruises, we take maximum food precautionary measures to ensure the safest quality product is offered to our guests; Worldwide Public Health Services advise that consuming raw or undercooked meats, seafood, shellfish, eggs, milk, or poultry may increase your risk of food-borne illness, especially if you have certain medical conditions.

### ONBOARD SMOKING POLICY

Smoking of cigarette, e-cigarette and vaporizer is permitted in the Connoisseur's Corner (inside and outside); at designated tables and seating outside the Panorama Lounge (starboard side) and on the Pool Deck (port side).

### DINNER

As a courtesy to your fellow guests please respect the times of your dinner reservation.

ATLANTIDE (DECK 4)

À la Carte 6:00 p.m. – Last Seating 8:30 p.m.

S.A.L.T. Kitchen (DECK 4)

À la Carte 6:30 p.m. – Last Seating 9:00 p.m.

KAISEKI (DECK 4) \*\*

À la Carte 6:30 p.m. – Last Seating 9:00 p.m.

A dining fee per person applies

LA TERRAZZA (DECK 7) \*\*

À la Carte 6:30 p.m. – Last Seating 9:00 p.m.

SILVER NOTE (DECK 7) \*\*

À la Carte 6:30 p.m. – Last Seating 9:30 p.m.

THE GRILL (DECK 10) \*/\*\*

À la Carte 6:30 p.m. – Last Seating 9:00 p.m.

LA DAME (DECK 8) \*\*

À la Carte 6:30 p.m. – Last Seating 9:00 p.m.

Gentlemen: Jacket required

A dining fee per person applies

Should you wish to cancel your reservation at La Dame, please note that you must do so by latest 2:00pm on the day of the reservation, otherwise the full cover fee per person will be billed to your Guest Account.

### BAR HOURS

9:00 a.m. – 10:30 p.m. Pool Bar \* [ Deck 10 ]

10:00 a.m. – until late Panorama Lounge [ Deck 9 ]

10:00 a.m. – until late Dolce Vita [ Deck 5 ]

6:00 p.m. – until late S.A.L.T. Bar [ Deck 4 ]

6:30 a.m. – until late Arts Café [ Deck 8 ]

6:00 p.m. – 11:00p.m. Observation Library [ Deck 11 ]

6:30 p.m. – until late Silver Note [ Deck 7 ]

9:00 p.m. – until late Connoisseur's Corner [ Deck 9 ]

\*Weather permitting

Smoking of cigars and pipes is allowed only in the Connoisseur's Corner (inside and outside).

Smoking is not allowed: In guest suites and guest suite verandas/balconies and inside all public areas, lounges and bars.

## SERVICES

### BOUTIQUE | DECK 8

Closed due to Maritime Restrictions and Port Regulations

Toiletries and other essential items are available for purchase upon request in the Boutique or through your Butler.

Dial 555 (Reception) for assistance.

### CASINO | DECK 7

Closed due to Maritime Restrictions and Port Regulations

Age restriction: over 18 to use the facilities

### OTIVM SPA | DECK 6

#### BEAUTY SALON AND BARBER SHOP

Dial 600 for appointments.

7:00 a.m. – 10:00 p.m.

### SAUNA & STEAM ROOM | DECK 6

7:30 a.m. – 10:00 p.m.

### FITNESS CENTRE | DECK 6

5:00 a.m. – 10:00 p.m.

Limited spaces available for classes.

Age restriction: over 18 to use the

facilities. 16-18 allowed in with guardian.

### FUTURE CRUISE SALES | DECK 5

Please dial 60515 or 80509 or consult your suite ITV to request an appointment.

8:00 a.m. – 12:00 p.m. | 3:00 p.m. – 7:00 p.m.

### SHORE CONCIERGE DESK | DECK 5

Dial 551 for assistance

during daily opening hours.

7:30 a.m. – 10:30 a.m. | 4:00 p.m. – 7:00 p.m.

### GUEST RELATIONS MANAGER | DECK 5

Dial 60502 for assistance.

8:00 a.m. – 12:00 p.m. | 4:00 p.m. – 8:00 p.m.

### MEDICAL CENTRE | DECK 3

Dial 10333 during clinic hours.

8:00 a.m. – 9:00 a.m. | 5:00 p.m. – 6:00 p.m.

Medical assistance is also available by appointment.

Dial 555 (Reception) after hours.

Emergency service is available 24 hours a day.

Please use the Forward elevator or Forward stairs to reach the clinic.

Kindly ask about charges prior to consultation.

**IN THE EVENT OF AN EMERGENCY PLEASE DIAL 999**

# Saturday, 24 May 2025

Sunrise 5:37 a.m. • Sunset 8:45 p.m.

## MORNING ACTIVITIES

7:00	Morning Stretch ( <i>sign up required</i> )	Fitness Centre (6)
8:00	<b>Silver Dawn is scheduled to dock in Halifax, Nova Scotia</b> Once the vessel has been cleared by local authorities, Cruise Director Moss will give weather and gangway location information <b>To listen to clearance announcements in your suite, please set the TV on the Bridge Camera Channel</b>	Public Address System / Bridge Camera Channel
8:00	Pure form Pilates ( <i>sign up required</i> )	Fitness Centre (6)
9:00	Shuffleboard will be set up for your enjoyment throughout the day ( <i>weather permitting</i> )	Outside Panorama Lounge (9)
9:00	Today's Silver Quiz, Crossword Puzzle and Sudoku are available ( <i>Return the Silver Quiz to Reception by 3:00 p.m. - prize points for the most accurate quiz that is returned earliest</i> )	Arts Café (8)
9:00	Board games will be available for your enjoyment	Observation Lounge (11)
9:00	Table Tennis will be available for your enjoyment ( <i>weather permitting</i> )	Outside Panorama Lounge (9)
9:00	Cornhole will be available to play ( <i>weather permitting</i> )	Outside Panorama Lounge (9)
9:30	Jigsaw Puzzle: Join your Entertainment Cruise Staff for this daytime activity	Panorama Lounge (9)
9:30	Knit and Stitch Club: Meet with fellow knitters and stitchers ( <i>no material provided</i> )	Observation Lounge (11)
10:00	Reveal your skin secret with HD Elemis Camera	OTIVM Spa (6)
10:00	Sudoku Challenge: Join your Entertainment Cruise Staff for this daytime activity	Panorama Lounge (9)
10:30	Complimentary sunglow application with our skin specialist	OTIVM Spa (6)
10:45	Shuffleboard Tournament: Join your Entertainment Cruise Staff for this daytime activity ( <i>weather permitting</i> )	Outside Panorama Lounge (9)
11:00	"Fabergé Egg Artwork" At our window gallery a new collection of creations of Theo Fabergé Limited edition exclusive collection on <i>Silver Dawn</i> . Available for viewing at our window gallery	Boutique (8)
11:00	Mandala Coloring: Join your Entertainment Cruise Staff for this daytime activity	Observation Lounge (11)

## AFTERNOON ACTIVITIES

2:00	<b>S.A.L.T. Lab Class: "Nova Scotia's French-Acadian Culinary Roots"</b> ( <i>please pre-register with guest services</i> )	S.A.L.T. Lab (4)
2:00	Duplicate Bridge Play with your Bridge Instructors Joe and Marilyn	Silver Note (7)
2:00	Dance Class with your Gentlemen hosts Jeff and Zak	Panorama Lounge (9)
3:00	Table Tennis Tournament: Join your Entertainment Cruise Staff for this daytime activity ( <i>weather permitting</i> )	Outside Panorama Lounge (9)
3:30	Cornhole Tournament with your Entertainment Cruise Staff for this daytime activity ( <i>weather permitting</i> )	Outside Panorama Lounge (9)
4:00	Walk-in clinic acupuncture pain relief	OTIVM Spa (6)
4:00	<b>Bingo!</b> with a member of the Entertainment Cruise Staff	Panorama Lounge (9)
4:30	Facial rejuvenation walk-in clinic with Dr. Marco ( <i>complimentary consultation</i> )	OTIVM Spa (6)
4:45	<b>Team Trivia</b> - Join Cruise Director Moss for this daytime activity	Dolce Vita (5)
5:00	Catholic Mass with Father Adam	Silver Note (7)
5:30	Golf Putting Competition: Join your Entertainment Cruise Staff for this daytime activity	Lobby (4)
5:45	Pianist Remon and Guitar Entertainer Felipe alternate performing for guests' listening pleasure	Dolce Vita (5)

## EVENING ACTIVITIES

**DRESS CODE: ELEGANT CASUAL**

6:00	Evening stretch ( <i>sign up required</i> )	Fitness Centre (6)
6:00	<i>Silver Dawn</i> Band plays for your dancing and listening pleasure	Panorama Lounge (9)
6:15	<b>Local Show! Silversea proudly presents: RCMP Pipe Band</b> The Royal Canadian Mounted Police (RCMP) Pipes & Drums of Nova Scotia showcases their musical talent	Venetian Lounge (5)
6:15	Solo Travellers get together with your Gentlemen Hosts Jeff and Zak	Panorama Lounge (9)
7:15	Jazz Pianist André plays for guests' listening pleasure	Silver Note (7)
8:15	Join Silver Note Jazz Duo Esther and André as they entertain you with their live music	Silver Note (7)
9:00	Pianist Remon and Guitar Entertainer Felipe alternate performing for guests' listening pleasure	Dolce Vita (5)
9:00	Guitar Entertainer Felipe performs for guests' listening pleasure	Panorama Lounge (9)
9:15	<b>Showtime! Silversea proudly presents: Musical Memories</b> Cruise Director Moss Hills and the <i>Silver Dawn</i> Band perform a mixture of really great music from some of the world's most popular artists including Dire Straits, James Brown, Santana, and more. It's a fun evening that is sure to stir up some of your own musical memories	Venetian Lounge (5)
10:15	DJ Gabor invites you to a party to celebrate the songs you love ( <i>until late</i> )	Panorama Lounge (9)
10:30	<b>All Aboard! Silver Dawn prepares to sail</b>	
11:00	<b>Silver Dawn sails for Boston, Massachusetts, U.S.A.</b>	

## SHIP PROCEDURES

Remember to carry your **Suite Key Card** whenever going ashore as this is your only valid identification for reboarding the vessel.

**Additionally please bring any Government issued Original Photo ID when you are going ashore as this is a requirement by the local authorities.**

## PIER INFORMATION

*Silver Dawn* is scheduled to dock in Pier 20/22, 1031 Marginal Road, Halifax, Canada

## IMPORTANT NOTICE

Silversea charges in United States Dollars for all shipboard transactions. We would like you to be aware that your credit card company may charge a foreign transaction fee. Silversea processes shipboard credit card transactions through the United Kingdom. Should you wish to register a different credit card to settle your account, please see our Reception Staff on Deck 5.

## CURRENCY EXCHANGE

The local currency is Canadian Dollar (CAD). Guests going ashore can expect the following rates of exchange:

**1 USD = 1.38 CAD approx.**

**1 GBP = 1.86 CAD approx.**

**1 EUR = 1.56 CAD approx.**

## SHIP'S AGENT

(for use in emergencies only)

F.K Warren Limited

24/7 Hotline: +19024238136

# Going ashore in Halifax, *Nova Scotia*

## EXCURSIONS

---

The excursions depart at the times listed below from the pier ashore. As a courtesy to your fellow guests and to allow the punctual departure of your excursion, we ask all participants to proceed ashore **10 minutes** prior to your departure time.

If you are late, unfortunately the transportation will not wait.

**Please do not forget to bring your excursion tickets and Suite Key Card.**

YHZ-AA	1st dep: Halifax Highlights .....	9:00 A.M.
YHZ-B	Peggy's Cove Coastal Drive & Titanic Cemetery .....	9:15 A.M.
YHZ-I	Iconic Towns of Nova Scotia .....	9:30 A.M.
YHZ-O	Heli-Picnic Escape to Sambro Island.....	9:30 A.M.
YHZ-10	World Cruise Collection: Oak Island Mysteries by Boat .....	10:00 A.M.

## AFTERNOON TOURS

YHZ-J	Local Tastes of Halifax by Foot .....	12:00 P.M.
YHZ-BA	Peggy's Cove Coastal Drive & Titanic Cemetery .....	1:00 P.M.
YHZ-AB	2nd dep: Halifax Highlights.....	1:45 P.M.
YHZ-014	Halifax Harbour Highlights & Wine Sail .....	6:30 P.M.

## EXCURSION INFORMATION

---

Port information and full tour descriptions are available on the interactive TV system in your suite for each port of call for this voyage. Excursion tickets cannot be exchanged after the cancellation deadline. A full charge applies for the additional excursion on the same day. Please check daily your in-suite TV for important messages regarding your excursions. Excursions may be canceled if minimum requirements is not met.

## U.S.A. AND CANADA - BIOSECURITY REGULATIONS

---

The United States of America and Canada have strict biosecurity laws, therefore it is **NOT** permitted to take any of the following items ashore. Fresh fruits and vegetables, meats, eggs, or dairy products, plants with or without soil, seedlings of all kinds (they require permits/certificates), unprocessed wood or wood products/handicrafts, goods including personal effects such as clothing and footwear that are contaminated with soil or other organic matter. Thank you for your cooperation.

---

**PLEASE NOTE THIS USEFUL INFORMATION WHEN GOING ASHORE.**

**SILVER DAWN SATELLITE PHONE NUMBER: +1 786 605 5750**

*All Aboard*  
*10:30 p.m.*