

# Chronicles

*News and Information for all onboard events*

**MONDAY, APRIL 6, 2026**

EN ROUTE TO TRINCOMALEE,  
SRI LANKA

**DRESS CODE: ELEGANT CASUAL**

On casual evenings, ladies may opt for trousers, a blouse, a skirt, or a casual dress, while gentlemen may wear an open-collar shirt and dress pants. A jacket is optional.  
After 6:00 p.m., indoor spaces prohibit jeans, shorts, hats, caps, sneakers or flip-flop type footwear. Casual wear is always suitable in outdoor venues. Gentlemen dining at La Dame are required to wear a jacket.

**TODAY'S WEATHER**

*Partly cloudy*

**High: 86°F 30°C**

**Low: 81°F 27°C**



**AT SEA**

*Aboard Silver Dawn*

# TREASURES OF SRI LANKA

## ISLAND OF PRECIOUS STONES

▶ 2:45 P.M.  
THE BOUTIQUE, DECK 8

Journey to the historic gem island of Sri Lanka, source of the world's famed Ceylon sapphires and other rare treasures. Discover how these gemstones formed, why they have adorned royalty for centuries, and what makes them so prized today. Join our Gemologist from Hubert Jewelry for an engaging seminar.



# SALON SERVICES

## KERATIN COMPLEX EXPRESS

▶ SPA, DECK 6

Say Goodbye to Frizz in Just One Hour!

Transform your hair with our revitalizing smoothing treatment that eliminates up to 95% of frizz and delivers sleek, glossy results lasting up to six weeks. Rejuvenate your hair and enjoy effortless smoothness you can see and feel. Only for today at \$149. Please dial 600 or visit the spa on Deck 6 aft to reserve a seat. Spaces are limited.



# WINE TASTING

▶ APRIL 8, AT 2:30 P.M.  
LA DAME, DECK 8

Join our Head Sommelier for an exclusive tasting of wines at La Dame on April 8, 2026 at 2:30 p.m. Discover the region's unique terroir and traditions. Reserve at the Reception Desk or with any Sommelier. A \$250 per person fee applies. Should you wish to cancel a reservation at any of our wine events, kindly do so no later than 24 hours prior to your reservation time. Cancellations made after this period will incur full cover charge per person.



# ROULETTE TOURNAMENT

## SPIN. WIN. CELEBRATE.

▶ CASINO, DECK 7

Visit our Casino from 2:00 p.m. until 6:00 p.m. and 9:00p.m. until late. Come and join us for our Roulette Tournament. It is very exciting and easy even for a first-timer Roulette player. Do not miss your chance to enjoy a winner's moment! Ask our friendly Casino staff for more information. Let the excitement begin!

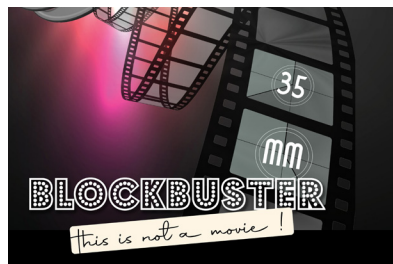


# 35MM BLOCKBUSTER

## TONIGHT'S SHOW

▶ 9:15 P.M.  
VENETIAN LOUNGE, DECK 5

From the soundtracks of some of the world's biggest movies, we present a selection of your favourite hit songs. Memorable movies, with unforgettable music, featuring our Silversea singers and dancers, with the *Silver Dawn* Band.



# VENETIAN SOCIETY REFERRAL OFFER

As a valuable loyalty member, both you and your friends benefit with our referral offer. When you refer a new to Silversea friend, you BOTH enjoy superb savings per suite referred on their new voyage booking. This is in addition to your Venetian Society savings (exclusive to Venetian Society members), Onboard Savings and current promotions.

Book onboard and combine this amazing offer with Exclusive Onboard Savings!

**VENETIAN SOCIETY REFERRAL OFFER IS VALID ON NEW BOOKINGS ONLY**



▶ For more information, please contact your Future Cruise Team, James and Elena on Deck 5, or extension 60515 or 80509

# FIND THE WI-FI PACKAGE THAT MEETS YOUR NEEDS

Complimentary Standard Internet access is offered to all guests.

For those desiring an elevated online experience, Premium Wi-Fi with unlimited access is available for purchase.

For assistance, please contact the Reception Desk.

	PREMIUM WI-FI	STANDARD WI-FI
BROWSE	✓	✓
MESSAGE	✓	✓
EMAIL	✓	✓
POST	✓	—
VOICE CALL	✓	—
VIDEO CHAT	✓	—
STREAM	✓	—

# Monday, April 6, 2026

## MORNING ACTIVITIES

8:00	Health Seminar: Morning Stretch with your Fitness Instructor ( <i>sign-up required</i> )	Fitness Center (6)
8:30	Health Seminar: Pure Form Yoga with your Fitness Instructor ( <i>sign-up required</i> )	Fitness Center (6)
9:00	Today's Silver Quiz, Crossword Puzzle, and Sudoku are available (Return the Quiz to Reception by 3:00 p.m.)	Arts Café (8)
9:00	Knitters and Stitchers: Gather and share your craft in a cozy knitting and stitching meetup (materials provided, unhosted)	Panorama Lounge (9)
9:00	Mahjong: Learn to play Mahjong with instruction from some of our guests in a fun and friendly session - no experience needed!	Observation Lounge (11)
9:30	<b>World Cruise Ambassador Concierge Desk</b> ( <i>next to Reception, until 11:00 a.m.</i> )	Dolce Vita (5)
9:30	<b>Beginners Bridge Lesson</b> with Bridge Instructors Karl and Andy	Silver Note (7)
9:30	<b>S.A.L.T. Lab Class: Bread with a Side of Beethoven "The Story of a Sri Lankan Icon"</b> ( <i>Please reserve before 8:00 p.m., Apr 5 at Reception</i> )	S.A.L.T. Lab (4)
9:30	<b>Archery:</b> Aim, shoot, and hit the inflatable bullseye in this exciting archery session with your Cruise Staff!	Outside Panorama Lounge (9)
9:45	<b>Creative Arts Program with Shelley Ocana: "Palm Silhouettes and Pink Sunsets"</b> - Create those images in watercolor with wet washes and dramatic hues	La Dame (8)
10:00	Spa Presents: Say goodbye to frizz in just one hour!	OTIVM Spa (6)
10:00	<b>Veterans Get-together:</b> Colonel Joe Koroluk, USAF "A-10 Warthog - Beauty or a Beast?" All are welcome	Panorama Lounge (9)
10:00	<b>Music Bingo</b> - Hit songs, Bingo fun! Join your Cruise Staff for a fun daytime activity and a chance to win Prize Points!	Dolce Vita (5)
10:00	Introducing Roberto Coin: Experience the romance and imagination of Roberto Coin's fine jewelry collection	Boutique (8)
10:15	<b>Destination Lecture with Chris McPherson: "From Cannon Fire to Cricket Crowds: The Changing Sounds of Galle"</b> Join Chris, your destination speaker, for an exploration into the history, culture and cuisine of Galle	Venetian Lounge (5)
10:30	<b>Intermediate Bridge Lesson</b> with your Bridge Instructors Karl and Andy	Silver Note (7)
11:00	Spa Presents: Enhance Your Natural Beauty with Dr. Smile	OTIVM Spa (6)
11:00	<b>Flip 7</b> - Take the Risk. Flip the Card. Stay in the Game. Join your Cruise Staff for a fun daytime activity and a chance to win Prize Points!	Dolce Vita (5)
11:00	<b>Shuffleboard Tournament:</b> Join your Cruise Staff for this daytime activity ( <i>weather permitting</i> )	Outside Panorama Lounge (9)
11:15	<b>Water Aerobics:</b> Join your Cruise Staff for this daytime activity ( <i>weather permitting</i> )	Pool Deck (10)
11:30	<b>NHL: New Jersey vs Montreal</b> ( <i>satellite reception permitting</i> )	Sport 24 Extra Channel
11:30	<b>Wellness Seminar: Relieve Arthritis, Back, Neck and Shoulder Pain Naturally with Acupuncture</b>	OTIVM Spa (6)
11:30	<b>Bean Bag Toss Tournament: Officers vs. Guests</b> ( <i>weather permitting</i> )	Outside Panorama Lounge (9)
11:30	<b>Rumba Dance Class</b> with your Gentlemen Hosts Jay and Geoff	Panorama Lounge (9)
11:30	<b>Mileage Pool:</b> Guess the ship's mileage and win prize points! ( <i>weather permitting</i> )	Arts Café (8) and Pool Deck (10)

## AFTERNOON ACTIVITIES

12:00	<b>Nautical and weather information announcement by Captain Ivo Botica</b>	Bridge Camera Channel 4 and Public Address System
12:00	<b>Lunch Extension: Flavors of Sri Lanka</b> - Savor a curated culinary experience inspired by timeless regional flavors	Pool Grill (10)
12:15	Lunch Time Melodies with DJ Gabor ( <i>weather permitting</i> )	Pool Deck (10)
1:30	<b>Duplicate Bridge</b> for experienced players with your Bridge Instructors Karl and Andy	Silver Note (7)
2:00	<b>S.A.L.T. Lab Class: Bread with a Side of Beethoven "The Story of a Sri Lankan Icon"</b> ( <i>Reserve before 10:00 a.m. today at Reception, Deck 5</i> )	S.A.L.T. Lab (4)
2:00	<b>Food and Beverage Concierge Desk:</b> Assists with all dining inquiries and reservations ( <i>next to Reception, until 4:00 pm</i> )	Dolce Vita (5)
2:00	Health Seminar: Detox for health and weight loss	Fitness Center (6)
2:00	Board Games: Learn new games with instruction from some of our guests in a fun and friendly session - no experience needed!	Observation Lounge (11)
2:15	<b>Enrichment Lecture with Sharon Giraud: "Dangerous Dining - Deadly Bites"</b> From Adam and Eve to present day, find out about the dark side of dining, nefarious uses of ingredients, and the precautions taken by famous and infamous characters in history	Venetian Lounge (5)
2:30	<b>ATP 1000 Tennis Monte Carlo Day 2</b> ( <i>satellite reception permitting</i> )	Sport 24 Channel
2:30	American Mahjong: Arrange games with your fellow guests (unhosted)	Observation Lounge (11)
2:45	<b>Treasures of Sri Lanka:</b> Join our Gemologists Terry and Veni for a seminar on Sri Lanka's gems	Boutique (8)
3:00	<b>Table Tennis Tournament</b> with a member of your Cruise Staff for this daytime activity ( <i>weather permitting</i> )	Outside Panorama Lounge (9)
3:00	Join our exclusive Roulette Tournament with our expert Casino team. Entry fee applies—don't miss the excitement!	Casino (7)
3:00	<b>Choir Practice:</b> Come and join World Cruise Ambassador and singer Eleanor for a fun choir for all abilities and voices. All welcome	Panorama Lounge (9)
3:15	<b>Enrichment Lecture with Sonja Bernhardt OAM: "Has Your Data Been Breached? Protecting Your Digital Life"</b> Learn how to check, protect, and simplify your digital identity	Venetian Lounge (5)
4:00	<b>S.A.L.T. Lab Class: Bread with a Side of Beethoven "The Story of a Sri Lankan Icon"</b> ( <i>Reserve before 10:00 a.m. today at Reception, Deck 5</i> )	S.A.L.T. Lab (4)
4:00	<b>Enrichment Lecture with Dr. Robin Craig: "The Future of The Human Race: Where Do We Go From Here?"</b> What does the future hold for humanity? In this talk, we will explore philosophical ideas surrounding the future of the human race	Venetian Lounge (5)
4:00	<b>Bingo!</b> Join your Cruise Staff for this daytime activity	Dolce Vita (5)
4:00	<b>World Cruise Ambassador Concierge Desk</b> ( <i>next to Reception, until 4:45 p.m.</i> )	Dolce Vita (5)
4:15	Roman Catholic Mass with Father Thomas and Father Stephen. All are welcome	Silver Note (7)
4:45	<b>Team Trivia:</b> Join Cruise Director Moss for this daytime activity for fun and prize points	Dolce Vita (5)
5:30	<b>Golf Putting Competition:</b> Join your Cruise Staff for this daytime activity	Lobby (4)
5:45	Pianist Remon and Guitar Entertainer Chayan alternate performances for guests' listening pleasure	Dolce Vita (5)

## EVENING ACTIVITIES

## DRESS CODE: ELEGANT CASUAL

6:00	<b>Final Sign-Up: The Cognac Luxury Experience</b> - Secure your place in an intimate journey through heritage, craftsmanship, and rare spirits	S.A.L.T. Bar (4)
6:00	<b>Enrichment Lecture with Omnia Holland: "Mind of a Serial Murderer"</b> Omnia shares her psychological profiling skills with her audience as they delve into the modus operandi and mind of a serial killer	Venetian Lounge (5)
6:00	Health Seminar: Evening Stretch with your Fitness Instructor ( <i>sign-up required</i> )	Fitness Center (6)
6:00	Silver Dawn Trio plays for your listening pleasure	Panorama Lounge (9)
6:00	Solo Travelers get together with your Gentlemen Hosts Jay and Geoff	Panorama Lounge (9)
6:45	Jazz Pianist Andre plays for guests' listening pleasure	Silver Note (7)
7:45	Join Silver Note Jazz Duo Andre and Esther as they entertain you with their live music	Silver Note (7)
9:00	Pianist Remon performs for your enjoyment	Dolce Vita (5)
9:15	<b>Showtime! 35mm Blockbuster:</b> Silversea Ensemble performs iconic movie hits with the <i>Silver Dawn</i> Band!	Venetian Lounge (5)
10:15	<b>Disco Night with DJ Gabor:</b> All your dance floor favorites, plus your requests	Panorama Lounge (9)



# All Day Dining

## BREAKFAST

ATLANTIDE (DECK 4)

À la Carte 8:00 a.m. – 9:30 a.m.

LA TERRAZZA (DECK 7)

Buffet 7:30 a.m. – 10:00 a.m.

## LUNCH

ATLANTIDE (DECK 4)

À la Carte 12:00 p.m. – 1:30 p.m.

KAISEKI (DECK 4)

À la Carte 12:00 p.m. – 2:00 p.m.

LA TERRAZZA (DECK 7)

Buffet 12:00 p.m. – 2:00 p.m.

THE GRILL (DECK 10) \*

À la Carte 12:00 p.m. – 3:30 p.m.

## OPEN ALL DAY

ARTS CAFÉ (DECK 8)

Light Snacks 6:30 a.m. – 11:00 p.m.

SPACCANAPOLI (DECK 11)

À la Carte 11:00 a.m. – 11:00 p.m.

\* Weather permitting

\*\* Reservations required

## IN-SUITE DINING

24-hour

The menu is available on the TV.

To place your order please contact your butler or call extension 500. In-Suite Dining is also available in other public areas when our dining venues are not open for service.

\*Consuming raw or uncooked meats, poultry, seafood, shellfish or eggs may increase your risk of foodborne illness, especially if you have certain medical conditions. Silversea kitchens are not allergen free environments. Please inform our Crew if you have a food allergy or dietary restrictions.

## DINNER

As a courtesy to your fellow guests please respect the times of your dinner reservation.

ATLANTIDE (DECK 4)

À la Carte 6:00 p.m. – 8:30 p.m.

S.A.L.T. Kitchen (DECK 4)

À la Carte 6:30 p.m. – 9:00 p.m.

KAISEKI (DECK 4) \*\*

À la Carte 6:30 p.m. – 9:00 p.m.

A dining fee per person applies

LA TERRAZZA (DECK 7) \*\*

À la Carte 6:30 p.m. – 9:00 p.m.

SILVER NOTE (DECK 7) \*\*

À la Carte 6:30 p.m. – 9:00 p.m.

THE GRILL (DECK 10) \*/\*\*

À la Carte 6:30 p.m. – 9:00 p.m.

LA DAME (DECK 8) \*\*

À la Carte 6:30 p.m. – 9:00 p.m.

Gentlemen: Jacket required

A dining fee per person applies

Should you wish to cancel a reservation at any of our specialty dining venues, kindly do so no later than 24 hours prior to your reservation time. Cancellations made after this period will incur the full cover charge per person.

## BAR HOURS

6:30 a.m. – 11:00 p.m.	Arts Café (Deck 8)
9:00 a.m. – 10:30 p.m.	Pool Bar * (Deck 10)
10:00 a.m. – until late	Panorama Lounge (Deck 9)
10:00 a.m. – until late	Dolce Vita (Deck 5)
6:00 p.m. – until late	S.A.L.T. Bar (Deck 4)
6:00 p.m. – 11:00 p.m.	Observation Lounge (Deck 11)
6:30 p.m. – until late	Silver Note (Deck 7)
9:00 p.m. – until late	Connoisseur's Corner (Deck 9)

\*Weather permitting

# SERVICES

## POOL & JACUZZI\* | DECK 10

7:00 a.m. – 7:00 p.m.

\* Weather permitting

## BOUTIQUE | DECK 8

Window gallery pop up boutique open all day for preview and viewing

10:00 a.m. – 10:00 p.m.

Toiletries and other essential items are available for purchase upon request in the Boutique or through your Butler.

Dial 555 (Reception) for assistance.

## CASINO | DECK 7

Slots: All day – until late

Tables: 2:00 p.m. – 6:00 p.m.

9:00 p.m. – until late

Age restriction: over 18 to use the facilities.

## OTIVM SPA | DECK 6

7:00 a.m. – 10:00 p.m.

## SAUNA & STEAM | DECK 6

7:00 a.m. – 10:00 p.m.

Ages 16-17 permitted with guardian

## FITNESS CENTER | DECK 6

5:00 a.m. – 10:00 p.m.

Ages 16-17 permitted with guardian

## FUTURE CRUISE SALES | DECK 5

Please dial 60515 or 80509 or consult your suite ITV to request an appointment.

8:00 a.m. – 12:00 p.m. | 2:00 p.m. – 6:00 p.m.

## SHORE CONCIERGE DESK | DECK 5

Dial 551 for assistance

during daily opening hours.

9:00 a.m. - 12:00 p.m. | 3:00 p.m. - 7:00 p.m.

## GUEST RELATIONS MANAGER | DECK 5

Dial 555 for assistance.

8:00 a.m. – 12:00 p.m. | 4:00 p.m. – 8:00 p.m.

## MEDICAL CENTER | DECK 3

Dial 10333 during clinic hours.

9:30 a.m. – 11:00 a.m. | 4:00 p.m. – 5:30 p.m.

Medical assistance is also available by appointment.

Dial 555 (Reception) after hours.

Emergency service is available 24 hours a day.

Please use the Forward elevator or Forward stairs to reach the clinic.

Kindly ask about charges prior to consultation.

## HAND WASHING & HAND SANITIZING

Keeping hands clean helps prevent illness and the spread of germs. Wash with soap and water when possible; alcohol-based sanitizers also reduce germs quickly. Please use the hand sanitizers at dining-area entrances and throughout the ship.

**IN THE EVENT OF AN  
EMERGENCY PLEASE DIAL 999**