

# Chronicles

*News and Information for all onboard events*

**TUESDAY, APRIL 7, 2026**

**TRINCOMALEE, SRI LANKA**

**Arrival:** 8:00 a.m.

**All Aboard:** 7:30 p.m.

**Departure:** 8:00 p.m.

**DRESS CODE: ELEGANT CASUAL**

On casual evenings, ladies may opt for trousers, a blouse, a skirt, or a casual dress, while gentlemen may wear an open-collar shirt and dress pants.

A jacket is optional.

After 6:00 p.m., indoor spaces prohibit jeans, shorts, hats, caps, sneakers or flip-flop type footwear. Casual wear is always suitable in outdoor venues. Gentlemen dining at La Dame are required to wear a jacket.

**TODAY'S WEATHER**

*Partly cloudy*

**High:** 91°F 33°C

**Low:** 81°F 27°C



## TRINCOMALEE, SRI LANKA

*Aboard Silver Dawn*

# PLAN AHEAD

## Upcoming ports



DATE	PORT	ARRIVE	DEPART
Apr 8	Day at Sea	-	-
Apr 9	Galle	7:00 a.m.	7:00 p.m.
Apr 10	Colombo	7:00 a.m.	11:00 p.m.

## YOUR EXPERIENCES ASHORE

### SHORE EXCURSION SUGGESTIONS

Enhance your voyage with our exceptional excursions. From day excursions or private arrangements, we offer you the world. Please visit the Shore Concierge Desk to discuss your options and reserve your excursions. If you prefer, you may request your excursions via MyCruise on your in-suite TV or by completing the Excursion Booking Form in your suite. Your butler will be pleased to deliver this if completed by our deadline.

#### CMB-B | Elephants of Pinnawela

9.5 Hours | \$459

Depart the pier for an approximate 3-hour drive to Pinnawela. A comfort stop will be made en-route.

#### CMB-L | S.A.L.T. Culinary Experience with Sri Lankan Master Chef Dr. Publis

6.5 Hours | \$399

Your S.A.L.T. Program experience begins with a short drive to the Pettah Bazar. Upon arrival, join a junior chef for a guided walking tour through this bustling local market, where a cacophony of colours, fresh produce, and spirited interactions between vendors and shoppers present wonderful photo opportunities.

DECK 5 EXT. 551

OPENING HOURS:

7:30 A.M. - 11:00 A.M. | 4:00 P.M. - 7:00 P.M.



## TRINCOMALEE, SRI LANKA

### *Extraordinary sites of ancient worship*

Built on a truly majestic natural harbour - one of the world's largest - Trincomalee is a gateway to the deep historical interests of Sri Lanka. Richly cultural and historic, Trincomalee is surrounded by treasured sites, which hark back thousands of years - and hold unprecedented cultural value. Set on the eastern coast of Sri Lanka - on the peninsula that it shares its name with - venture inland to explore some of the world's most majestic and evocative archaeological and holy sites. Or, take it easy and lay back on Trincomalee's plentiful, palm-lined beaches.

Boat tours can take you out to cruise among dolphins and whales, or to the reefs of Pigeon Island. A swirl of colonial houses, temples and mosques line the multi-cultural streets of this fascinating destination.

Live like a local and start the day with a steaming cup of Ceylon tea and buffalo curd for breakfast before heading out to visit extraordinary sites of ancient worship, as you explore Sri Lanka's incredible UNESCO World Heritage Sites. Head inland to the jaw-dropping Golden Temple of Dambulla, a vast temple, dominated by a gleaming gold Buddha figure. The amazing Ancient City of Polonnaruwa dates back to the 12th century and is an unearthed treasure trove of ruins - famous for its meticulously thought out urban planning.

Polonnaruwa was the second capital of Sri Lanka, and you can visit the first capital at the Sacred City of Anuradhapura - a place of immense value to the Buddhist faith. The Sirigiya Rock Fortress is a jaw-dropping collaboration between man and nature, and the incredible fortress sits perched above an almighty 200-metre high slab of rock.

### SIGHTS

- Thirukoneswaram Kovil
- Marble Beach
- Trincomalee Beach
- Fort Frederick
- Shri Badrakali Amman Hindu Temple
- Trincomalee War Cemetery

### SHOPPING

Shopping is not just an activity you do, it is a feeling. Taking things back from a country is not just about money, but something tangible that stays.

This sparsely populated island offers a small variety of trinkets. Mostly there are booths near the temples and places of visit selling souvenirs, pottery, brassware, clothing, handmade jewellery, holy images etc. which make good mementos.

## SALON SERVICES

### THE ULTIMATE MEN'S FACIAL & SHAVE

▶ SPA, DECK 6

A complete skin, scalp, and grooming ritual featuring deep cleansing, a double close shave, targeted exfoliation, revitalizing masks, therapeutic massage, and CryoGlobe cooling technology for the ultimate refresh. Book your ultimate reset today for \$149. Dial 600 or visit the spa on Deck 6 to reserve—space is limited.



## WINE TASTING

▶ APRIL 8, AT 2:30 P.M.  
LA DAME, DECK 8

Join our Head Sommelier for an exclusive tasting of wines at La Dame on April 8 at 2:30 p.m.. Discover the region's unique terroir and traditions. Reserve at the Reception Desk or with any Sommelier. A \$250 per person fee applies. Please note that the full fee will be charged for no-shows or cancellations made less than 24 hours prior to the event.



## JOHN HARDY

### BOUTIQUES AT SILVERSEA

▶ THE BOUTIQUE, DECK 8

Inspired by Bali and its time-honored jewelry-making traditions, Canadian artist John Hardy established an artisan collective in 1975 dedicated to creating one-of-a-kind jewelry and preserving the rich heritage of Bali. Browse the John Hardy Collection today.



## THE EPICUREAN EXPERIENCE

Savor the refined flavors of La Dame and Kaiseki at our best combined price, plus enjoy priority reservations at the complimentary Silver Note. With this exclusive offer, you'll discover firsthand why Food & Wine named Silversea the leader in Food and Beverage. Visit the reception desk or any dining venue to confirm availability.

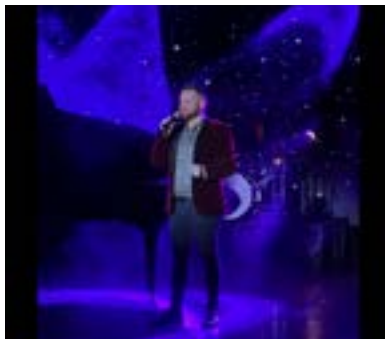


## "SONGS OF LEGENDS"

### HEADLINE ENTERTAINER JOHN MILLIGAN

▶ 9:15 P.M.  
VENETIAN LOUNGE, DECK 5

For the past eight years, John Milligan has entertained vacationers in theatres, piano bars, and lounges across cruise ships around the world. With a natural on-stage presence, rich musicianship, and an extensive repertoire, John keeps audiences singing along, tapping their feet, and dancing to the songs they know and love.



## SAVE UP TO \$7,000

### PLUS SUITE UPGRADE

For three weeks only, save up to \$7,000 per suite and enjoy a suite upgrade of up to two categories on a range of voyages worldwide. From castle-crowned skylines in the Mediterranean to breathtaking landscapes in Asia, boundless exploration awaits. Reserve your suite between April 7 and April 30, 2026 – with reduced deposits from 15%.

Book onboard and combine this amazing offer with Exclusive Onboard Savings!



▶ For more information, please contact your Future Cruise Team, James and Elena on Deck 5, or extension 60515 or 80509

## SPACCANAPOLI



▶ DECK 11

Inspired by Silversea's Italian heritage, Spaccanapoli aboard *Silver Dawn* captures la dolce vita with authentic dough, the freshest ingredients, and a relaxed dining experience—an ode to Naples' iconic street and Italy's timeless passion for life.

## MATCH PLAY



▶ CASINO, DECK 7

Join us at the Casino from 9:00 p.m. for an elevated Blackjack experience. When the first Blackjack of each shoe is dealt, every guest at the table receives a \$5 Match Play. Embrace the elegance of shared fortune—our friendly Casino team will be delighted to provide further details.



# ALL DAY DINING

## BREAKFAST

ATLANTIDE (DECK 4)  
À la Carte 8:00 a.m. – 9:30 a.m.

LA TERRAZZA (DECK 7)  
Buffet 7:00 a.m. – 10:00 a.m.

## LUNCH

ATLANTIDE (DECK 4)  
À la Carte 12:00 p.m. – 1:30 p.m.

KAISEKI (DECK 4)  
À la Carte 12:00 p.m. – 2:00 p.m.

LA TERRAZZA (DECK 7)  
Buffet 12:00 p.m. – 2:00 p.m.

THE GRILL (DECK 10) \*  
À la Carte 12:00 p.m. – 3:30 p.m.

## OPEN ALL DAY

ARTS CAFÉ (DECK 8)  
Light Snacks 6:30 a.m. – 11:00 p.m.

SPACCANAPOLI (DECK 11)  
À la Carte 11:00 a.m. – 11:00 p.m.

\* Weather permitting  
\*\* Reservations required

## IN-SUITE DINING

24-hour  
The menu is available on the TV.  
To place your order please contact your butler or call extension 500. In-Suite Dining is also available in other public areas when our dining venues are not open for service.

\*Consuming raw or uncooked meats, poultry, seafood, shellfish or eggs may increase your risk of foodborne illness, especially if you have certain medical conditions. Silversea kitchens are not allergen free environments. Please inform our Crew if you have a food allergy or dietary restrictions.

## DINNER

*As a courtesy to your fellow guests please respect the times of your dinner reservation.*

ATLANTIDE (DECK 4)  
À la Carte 6:00 p.m. – 8:30 p.m.

S.A.L.T. Kitchen (DECK 4)  
À la Carte 6:30 p.m. – 9:00 p.m.

KAISEKI (DECK 4) \*\*  
À la Carte 6:30 p.m. – 9:00 p.m.  
A dining fee per person applies

LA TERRAZZA (DECK 7) \*\*  
À la Carte 6:30 p.m. – 9:00 p.m.

SILVER NOTE (DECK 7) \*\*  
À la Carte 6:30 p.m. – 9:00 p.m.

THE GRILL (DECK 10) \*/\*\*  
À la Carte 6:30 p.m. – 9:00 p.m.

LA DAME (DECK 8) \*\*  
À la Carte 6:30 p.m. – 9:00 p.m.  
Gentlemen: Jacket required  
A dining fee per person applies

*Should you wish to cancel a reservation at any of our specialty dining venues, kindly do so no later than 24 hours prior to your reservation time. Cancellations made after this period will incur the full cover charge per person.*

## BAR HOURS

6:30 a.m. – 11:00 p.m.	Arts Café [ Deck 8 ]
9:00 a.m. – 10:30 p.m.	Pool Bar * [ Deck 10 ]
10:00 a.m. – until late	Panorama Lounge [ Deck 9 ]
10:00 a.m. – until late	Dolce Vita [ Deck 5 ]
6:00 p.m. – until late	S.A.L.T. Bar [ Deck 4 ]
6:00 p.m. – 11:00 p.m.	Observation Lounge [ Deck 11 ]
6:30 p.m. – until late	Silver Note [ Deck 7 ]
9:00 p.m. – until late	Connoisseur's Corner [ Deck 9 ]

\*Weather permitting

# SERVICES

## POOL & JACUZZI\* | DECK 10

7:00 a.m. – 7:00 p.m.  
\* Weather permitting

## BOUTIQUE | DECK 8

8:30 p.m. – 11:00 p.m.  
*Toiletries and other essential items are available for purchase upon request in the Boutique or through your Butler. Dial 555 (Reception) for assistance.*

## CASINO | DECK 7

Slot & Tables: 9:00 p.m. – until late  
*Age restriction: over 18 to use the facilities.*

## OTIVM SPA | DECK 6

7:00 a.m. – 10:00 p.m.

## SAUNA & STEAM | DECK 6

7:00 a.m. – 10:00 p.m.  
*Ages 16-17 permitted with guardian*

## FITNESS CENTER | DECK 6

5:00 a.m. – 10:00 p.m.  
*Ages 16-17 permitted with guardian*

## FUTURE CRUISE SALES | DECK 5

Please dial 60515 or 80509 or consult your suite ITV to request an appointment.  
9:00 a.m. – 12:00 p.m. | 4:00 p.m. – 7:00 p.m.

## SHORE CONCIERGE DESK | DECK 5

Dial 551 for assistance during daily opening hours.  
7:30 a.m. – 11:00 a.m. | 4:00 p.m. – 7:00 p.m.

## GUEST RELATIONS MANAGER | DECK 5

Dial 555 for assistance.  
8:00 a.m. – 12:00 p.m. | 4:00 p.m. – 8:00 p.m.

## MEDICAL CENTER | DECK 3

Dial 10333 during clinic hours.  
8:00 a.m. – 9:00 a.m. | 5:00 p.m. – 6:00 p.m.  
Medical assistance is also available by appointment.  
Dial 555 (Reception) after hours.  
*Emergency service is available 24 hours a day. Please use the Forward elevator or Forward stairs to reach the clinic.*  
Kindly ask about charges prior to consultation.

## RESERVING DECK CHAIRS

Kindly note that deck chairs cannot be reserved. If leaving for long periods, take your belongings so others may use the chairs. Items left unattended for about an hour will be removed and sent to Reception (Lost & Found). For assistance, contact the pool bartender. Thank you for your cooperation in this matter.

**IN THE EVENT OF AN EMERGENCY PLEASE DIAL 999**

# Tuesday, April 7, 2026

Sunrise 5:59 a.m. • Sunset 6:14 p.m.

## NAVIGATIONAL BRIDGE TOUR SIGN UP

Guests wishing to visit the Navigational Bridge please sign up at Reception, Deck 5. Maximum of 12 guests per visit. Subject to space availability and weather conditions. Taking photos and making videos are not allowed.

## MORNING ACTIVITIES

8:00	<b>Silver Dawn is scheduled to dock in Trincomalee, Sri Lanka</b>	Public Address System / Bridge Camera Channel 4
	Once the vessel has been cleared by local authorities, Cruise Director Moss will announce the weather and gangway location information.	
	To listen to clearance announcements in your suite, please set the TV on the Bridge Camera Channel #4	
8:00	Health Seminar: Morning Stretch with your Fitness Instructor (sign up required)	Fitness Center (6)
9:00	<b>NRL: Knights vs Raiders</b> (satellite reception permitting)	Sport 24 Channel
9:00	Today's Silver Quiz, Crossword Puzzle, and Sudoku are available (Return the Quiz to Reception by 3:00 p.m.)	Arts Café (8)
9:00	Knitters and Stitches: Gather and share your craft in a cozy knitting and stitching meetup (unhosted)	Panorama Lounge (9)
9:00	Shuffleboard is set up for your enjoyment throughout the day (weather permitting)	Outside Panorama Lounge (9)
9:00	Bean Bag Toss will be available to play (weather permitting)	Outside Panorama Lounge (9)
9:00	Table Tennis is available for your enjoyment (weather permitting)	Outside Panorama Lounge (9)
9:00	Board games are available for your enjoyment	Observation Lounge (11)
9:00	Bridge play and American Mahjong: Arrange games with your fellow guests (unhosted)	S.A.L.T. Kitchen (4)
9:30	<b>Bean Bag Toss:</b> Toss, score, and compete with your Cruise Staff for a fun daytime activity and a chance to win Prize Points!	Outside Panorama Lounge (9)
10:00	<b>S.A.L.T. Lab Class: Bread with a Side of Beethoven - "The Story of a Sri Lankan Icon"</b> (Please reserve before 8:00 p.m., Apr 6 at Reception)	S.A.L.T. Lab (4)
10:30	<b>Spa Presents: Shop your favorite beauty product and we ship it to your home</b>	OTIVM Spa (6)
11:00	Spa Presents: Reveal your skin's secret with our ELEMIS HD SkinLab!	OTIVM Spa (6)
11:30	Shuffleboard Tournament: Join your Cruise Staff for this daytime activity (weather permitting)	Outside Panorama Lounge (9)

## AFTERNOON ACTIVITIES

2:00	<b>Food and Beverage Concierge Desk</b> (next to Reception, until 4:00 p.m.)	Dolce Vita (5)
2:30	<b>ATP 1000 Tennis Monte Carlo Day 3</b> (satellite reception permitting)	Sport 24 Channel
2:30	Bridge play and American Mahjong: Arrange games with your fellow guests (unhosted)	S.A.L.T. Kitchen (4)
3:00	<b>Table Tennis Tournament</b> with a member of your Cruise Staff for this daytime activity (weather permitting)	Outside Panorama Lounge (9)
3:00	<b>S.A.L.T. Lab Class: Bread with a Side of Beethoven - "The Story of a Sri Lankan Icon"</b> (Reserve before 10:00 a.m. today at Reception, Deck 5)	S.A.L.T. Lab (4)
4:00	<b>Bingo!</b> Join your Cruise Staff for this daytime activity	Dolce Vita (5)
4:45	<b>Team Trivia:</b> Join Cruise Director Moss for this daytime activity for fun and prize points	Dolce Vita (5)
5:30	<b>Golf Putting Competition:</b> Join your Cruise Staff for this daytime activity	Lobby (4)
5:45	Pianist Remon and Guitar Entertainer Chayan alternate performances for guests' listening pleasure	Dolce Vita (5)

## EVENING ACTIVITIES

## DRESS CODE: ELEGANT CASUAL

6:00	<i>Silver Dawn</i> Trio plays for your listening pleasure	Panorama Lounge (9)
6:00	Solo Travelers get together with your Gentlemen Hosts Jay and Geoff	Panorama Lounge (9)
6:45	Jazz Pianist Andre plays for guests' listening pleasure	Silver Note (7)
7:30	<b>All Aboard! Silver Dawn prepares to sail</b>	
7:45	Join Silver Note Jazz Duo Andre and Esther as they entertain you with their live music	Silver Note (7)
8:00	<b>Silver Dawn sails for Galle, Sri Lanka</b>	
8:30	John Hardy - Browse the John Hardy Collection today	Boutique (8)
9:00	<b>Live Jewelry Auction Preview</b> - Visit the boutique on Deck 8 today to view or pre-bid on fine jewelry for tomorrow's auction	Boutique (8)
9:00	Pianist Remon performs for your listening pleasure	Dolce Vita (5)
9:00	Join us at the Silversea Casino for Blackjack—first Blackjack of every shoe means a win for all players!	Casino (7)
9:00	Guitarist Chayan plays for your listening pleasure	Panorama Lounge (9)
9:15	<b>Showtime! Silversea Proudly Presents John Milligan "Songs of Legends"</b>	Venetian Lounge (5)
	Celebrating some of the most beautiful songs ever written, witness John Milligan's stellar performance of his favourite songs!	
10:15	<b>Disco Night with DJ Gabor:</b> All your dance floor favourites, plus your requests	Panorama Lounge (9)

# Going ashore in Trincomalee, *Sri Lanka*

## SHIP PROCEDURES

An announcement will be made when the ship has been cleared by local authorities for guests to proceed ashore. Remember to carry your **Suite Key Card and a Digital Copy of your Passport** (a photo on your mobile device is sufficient) whenever going ashore as this is your only valid identification for reboarding the vessel.

## PIER INFORMATION

*Silver Dawn* is scheduled to dock in Ashraf Pier Sri Lanka Ports Authority, Trincomalee

## IMPORTANT NOTICE

Silversea charges in United States Dollars for all shipboard transactions. We would like you to be aware that your credit card company may charge a foreign transaction fee. Silversea processes shipboard credit card transactions through the United Kingdom. Should you wish to register a different credit card to settle your account, please see our Reception Staff on Deck 5.

## CURRENCY EXCHANGE

The local currency is Sri Lankan Rupees (LKR).

Guests going ashore can expect the following rates of exchange:

**1 USD = 314.79 LKR approx.**

**1 EUR = 362.80 LKR approx.**

**1 GBP = 415.76 LKR approx.**

## SHIP'S AGENT

(for use in emergencies only)

COLOMBO SHIPPING SOLUTIONS (PVT) LTD


Mob: : +94 771 766 769

Email: ops@colomboshipping.com

## EXCURSIONS

The excursions depart at the times listed below from the pier ashore. As a courtesy to your fellow guests and to allow the punctual departure of your excursion, we ask all participants to proceed ashore **10 minutes** prior to your departure time. If you are late, unfortunately the transportation will not wait.

**Please do not forget to bring your excursion tickets, Quietvox Device, Suite Key Card and a Digital Copy of your Passport.**

TRC-E	Ruins of Polonnaruwa - UNESCO World Heritage Site 	8:30 a.m.
TRC-G	Sigiriya Rock Fortress - UNESCO World Heritage Site 	8:30 a.m.
TRC-D	Rangiri Temple Cave of D a.m.bulla - UNESCO World Heritage Site 	8:45 a.m.
TRC-I	Temple & Sights of Trincomalee	9:00 a.m.
TRC-H	Sri Lankan Safari at Minneriya National Park 	10:30 a.m.
TRC-IA	Temple & Sights of Trincomalee	2:00 p.m.

## ENHANCE YOUR EXCURSION - QUIETVOX MAKES LISTENING EASY

Make the most out of your guided Excursion with Quietvox. This personal audio system – available for select Shore Excursions – ensures you hear your guide clearly for a more engaging experience ashore. To check if Quietvox is offered on your Excursion, look for the headset icon on your Chronicles. If listed, simply bring the device from your suite when heading ashore.

## HOSPITALITY DESK

Meet our local Hospitality Desk Representative on Deck 5 at the Shore Concierge Desk. Available from **8:00 a.m. until 12:00 p.m.** to offer personalized guidance to local attractions, ensuring a smooth and enjoyable shore experience.

## SHUTTLE BUS

A complimentary shuttle bus service will operate between the **Passenger Terminal and the Clock Tower from 9:30 a.m. to 6:00 p.m.**, with the **last bus departing at 6:00 p.m.**

The journey takes approximately 20–30 minutes each way.

Shuttle buses will run at 30-minute intervals. Guests are kindly advised to arrive at the designated pickup points at least 5 minutes prior to departure.

The full shuttle schedule will be available at the Shore Concierge Desk (Deck 5) and at the gangway.

*All Aboard*  
**7:30 p.m.**

**PLEASE NOTE THIS USEFUL INFORMATION WHEN GOING ASHORE.**  
**SILVER DAWN SATELLITE PHONE NUMBER: +1 786 605 5750**