

# Chronicles

*News and Information for all onboard events*

**SATURDAY, APRIL 11, 2026**

EN ROUTE TO COCHIN, INDIA

**DRESS CODE: ELEGANT CASUAL**

On casual evenings, ladies may opt for trousers, a blouse, a skirt, or a casual dress, while gentlemen may wear an open-collar shirt and dress pants.

A jacket is optional.

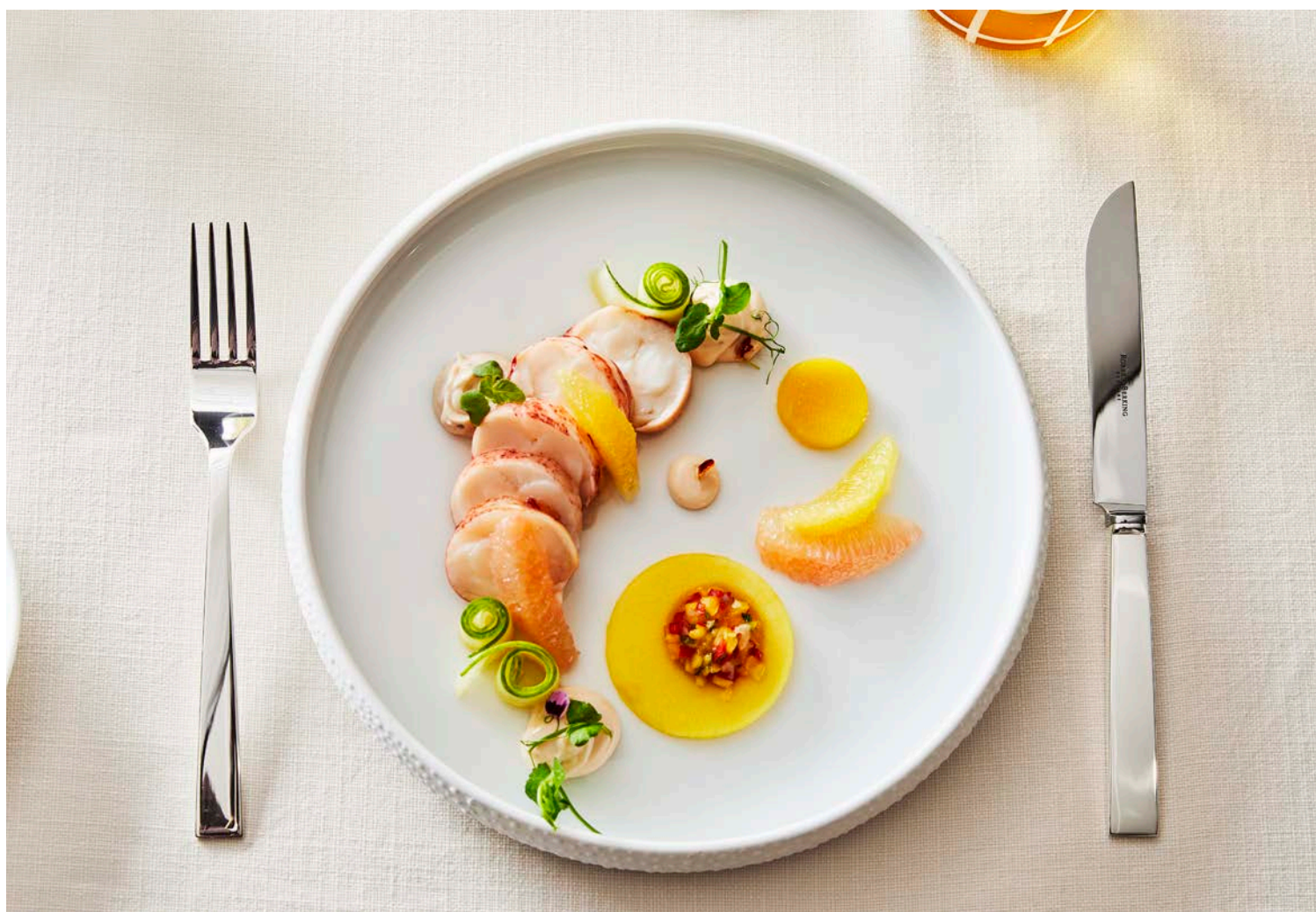
After 6:00 p.m., indoor spaces prohibit jeans, shorts, hats, caps, sneakers or flip-flop type footwear. Casual wear is always suitable in outdoor venues. Gentlemen dining at La Dame are required to wear a jacket.

**TODAY'S WEATHER**

*Partly cloudy*

**High: 86°F 30°C**

**Low: 84°F 29°C**



## AT SEA

*Aboard Silver Dawn*

# WINE TASTING

▶ APRIL 14 AT 2:30 P.M.  
LA DAME, DECK 8

Join our Head Sommelier for an exclusive tasting of white wines at La Dame, deck 8 on April 14 at 2:30 p.m. Discover the region's unique terroir and traditions. Reserve at the Reception Desk or with any Sommelier. A \$100 per person fee applies.

Please note that the full fee will be charged for no-shows or cancellations made less than 24 hours prior to the event.



# GEMS OF THE MAHARAJAS

## INDIA'S ROYAL TREASURES

▶ AT 2:45 P.M.  
THE BOUTIQUE, DECK 8

Discover the legendary gemstones of India's great rulers, from historic diamonds to carved emeralds and royal rubies. Hear the fascinating stories behind these famous treasures and see how their beauty lives on in the gemstones we admire today. Hosted by Terry and Veni our Gemologists from Hubert Jewelry.



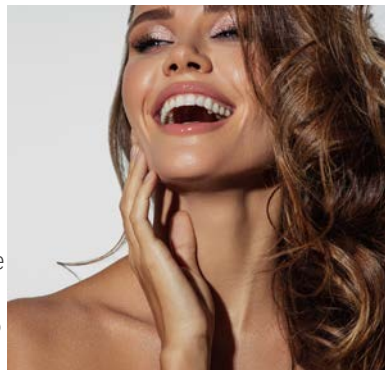
# SALON SERVICES

## LIVE! HAIR SHOW

▶ AT 2:00 P.M.  
SPA, DECK 6

Tired of Bad Hair Days? Looking for a New Look?

Discover the best hairstyles, colors, and treatments tailored to your face shape. Feel amazing with a new style! Plus, one lucky guest will win a complimentary cut and style. Please dial 600 or visit the spa on Deck 6 aft to reserve a seat. Spaces are limited.



# LA DAME

## THE GRANDE CUISINE FRANCAISE ONBOARD

Experience elevated French fine dining blending classic Grande Cuisine and modern flair. Enjoy rich, balanced tasting menus or à la carte dishes, paired with exceptional wines. A reservation fee applies. Please contact Maître d'hôtel to secure your place.



# “SMOKE ON THE WATER”

## HEADLINE ENTERTAINER ANALIZA CHING

▶ AT 6:15 P.M.  
VENETIAN LOUNGE, DECK 5

Analiza Ching was classically trained from the age of 4 by her father and later studied at Royal Academy of Music in London, age 12 she won the Asian Young Musician of the Year and was one of the finalists on ITV Britain's Got Talent, UK's biggest TV talent show. Analiza has performed for the Royal Family, naming her the fastest violinist. She has performed solo with the Royal Philharmonic Orchestra at Royal Albert Hall, for the Hollywood A-list in Beverly Hills and has opened many major fashion and music awards around the world including at the Grammys and also the Olympics.



# SPECIAL COMBINATION CRUISES

Save up to 25%\* and enjoy a \$1,000 shipboard credit per suite – go further with our Combination Cruises. We have carefully curated a select number of journeys designed to prolong your Silversea experience, allowing you to discover each region in greater depth.

Combination Cruises bring together two or more magical voyages to create one unforgettable experience!

Book onboard and combine this amazing offer with Exclusive Onboard Savings!



▶ For more information, please contact your Future Cruise Team, James and Elena on Deck 5, or extension 60515 or 80509

# PHONE ETIQUETTE ONBOARD

As a courtesy to your fellow guests, we kindly ask you to refrain from using the speaker function on your cell phone in any public area or public venue onboard.

# FREE LESSONS



▶ CASINO, DECK 7

Visit our Casino from 3:00 p.m. Have you ever entered a Casino and wanted to sit down but felt intimidated because you did not know the game rules or the etiquette? "Learn to Play" is taught by our most skilled casino dealers in a relaxed and fun setting.

Come yourself or together with a couple of your friends to enjoy the fun!

# Saturday, April 11, 2026

## SEYCHELLES TRAVEL AUTHORISATION - FOR GUESTS DISEMBARKING IN MAHÉ

If you need assistance please bring your mobile device to Dolce Vita (deck 5) from 9:00 a.m - 12:00 noon. This is only for guests who are disembarking in Mahé, please refer to the letter that was sent to your suite.

### MORNING ACTIVITIES

9:00	Today's Silver Quiz, Crossword Puzzle, and Sudoku are available ( <i>Return the Quiz to Reception by 3:00 p.m.</i> )	Arts Café (8)
9:00	Knitters and Stitches: Gather and share your craft in a cozy knitting and stitching meetup ( <i>materials provided, unhosted</i> )	Panorama Lounge (9)
9:00	Mahjong: Learn to play Mahjong with instruction from some of our guests in a fun and friendly session - no experience needed!	S.A.L.T. Kitchen (4)
9:30	<b>World Cruise Ambassador Concierge Desk</b> ( <i>next to Reception, until 11:00 a.m.</i> )	Dolce Vita (5)
9:30	<b>Beginners Bridge Lesson</b> with Bridge Instructors Karl and Andy: Learn the basics of bridge with our friendly instructors	S.A.L.T. Kitchen (4)
9:30	<b>Archery</b> - Aim, shoot, and hit the inflatable bullseye in this exciting archery session with Cruise Staff	Outside Panorama Lounge (9)
9:30	<b>S.A.L.T. Lab Class: "Seafood, Spices, and Beef: Kerala's diverse food cultures"</b> ( <i>Reserve before 8:00 p.m., Apr 10 at Reception, Deck 5</i> )	S.A.L.T. Lab (4)
10:00	<b>Nautical Quiz</b> - Ahoy, mateys! Test your sea legs with this fun quiz. Join your Cruise Staff for a fun daytime activity	Dolce Vita (5)
10:15	<b>Destination Lecture with Chris McPherson: "Cochin: Where Sailors, Spice Traders, and Storytellers Came Ashore"</b> Join Chris, your destination speaker, for an exploration into the history, culture and cuisine of Cochin	Venetian Lounge (5)
10:30	<b>Intermediate Bridge Lesson</b> with your Bridge Instructors Karl and Andy	S.A.L.T. Kitchen (4)
11:00	<b>Music Bingo</b> - A musical twist on bingo with songs you know and love with your Cruise Staff	Dolce Vita (5)
11:00	Join us for an exciting ELEMIS Skincare Workshop and discover how to help reverse the visible effects of sun exposure	OTIVM Spa (6)
11:00	<b>The Vintage Chanel Unveiling:</b> Join the Boutique Team for the unveiling of rare and vintage Chanel handbags and accessories	Boutique (8)
11:00	<b>Shuffleboard Tournament:</b> Join your Cruise Staff for this daytime activity ( <i>weather permitting</i> )	Outside Panorama Lounge (9)
11:15	<b>S.A.L.T. Talk: "Seafood, Spices, and Beef: Kerala's diverse food cultures"</b> with S.A.L.T Host Carolina and S.A.L.T. Chef Oleksii	Venetian Lounge (5)
11:15	<b>Water Aerobics:</b> Join your Cruise Staff for this daytime activity ( <i>weather permitting</i> )	Pool Deck (10)
11:30	Spa Presents: Explore how light is transforming healthcare and Acupuncture	OTIVM Spa (6)
11:30	<b>Bean Bag Toss Tournament: Officers vs. Guests</b> ( <i>weather permitting</i> )	Outside Panorama Lounge (9)
11:30	<b>Cha Cha Dance Class</b> with your Gentlemen Hosts Jay and Geoff	Panorama Lounge (9)
11:30	<b>Mileage Pool:</b> Guess the ship's mileage and win prize points! ( <i>weather permitting</i> )	Arts Café (8) and Pool Deck (10)

### AFTERNOON ACTIVITIES

12:00	<b>Nautical and weather information announcement by Captain Ivo Botica</b>	Bridge Camera Channel 4 and Public Address System
12:00	<b>Lunch Extension: Featuring Fire and Wok</b>	Pool Deck (10)
12:15	Lunch Time Melodies with <i>Silver Dawn</i> Trio ( <i>weather permitting</i> )	Pool Deck (10)
1:30	<b>Duplicate Bridge</b> for experienced players with your Bridge Instructors Karl and Andy	S.A.L.T. Kitchen (4)
2:00	<b>S.A.L.T. Lab Class: "Seafood, Spices, and Beef: Kerala's diverse food cultures"</b> ( <i>reserve before 10:00 a.m. today at Reception, Deck 5</i> )	S.A.L.T. Lab (4)
2:00	<b>Enrichment Lecture with Sonja Bernhardt OAM: "Invisible Infrastructure: The Hidden Systems Powering Our World"</b> Beneath oceans, above the skies, and all around us, invisible systems keep our world running. Uncover the fascinating technology powering everyday life – most of us never even notice	Venetian Lounge (5)
2:00	<b>Food and Beverage Concierge Desk:</b> Assists with all dining inquiries and reservations ( <i>next to Reception, until 4:00 pm</i> )	Dolce Vita (5)
2:00	LIVE! Hair Show: New Look New You	OTIVM Spa (6)
2:00	Board Games: Learn new games with instruction from some of our guests in a fun and friendly session - no experience needed!	Observation Lounge (11)
2:30	<b>Creative Arts Program with Shelley Ocana: "Lanterns of Sri Lanka"</b> Draw and paint these colorful lanterns in watercolor using vision pen techniques to accentuate lines and form and add pretty washes	S.A.L.T. Kitchen (4)
2:30	American Mahjong: Arrange games with your fellow guests ( <i>unhosted</i> )	S.A.L.T. Kitchen (4)
2:45	<b>Gems of the Maharajas:</b> Join our Gemologist for a seminar on India's royal treasures	Boutique (8)
3:00	<b>Enrichment Lecture with Dr. Robin Craig: "The Quest for Life on Other Worlds"</b> What is life? Where might other life exist and how common is it in the universe? Do we have any evidence that alien life exists?	Venetian Lounge (5)
3:00	<b>Premier League: Arsenal vs Bournemouth</b> ( <i>satellite reception permitting</i> )	Sport 24 Channel
3:00	<b>ATP 1000 Tennis Monte Semi Finals</b> ( <i>satellite reception permitting</i> )	Sport 24 Extra Channel
3:00	<b>Table Tennis Tournament</b> with a member of your Cruise Staff for this daytime activity ( <i>weather permitting</i> )	Outside Panorama Lounge (9)
3:00	<b>Participate in our Casino Event alongside our friendly Casino Staff</b>	Casino (7)
3:00	<b>Choir Practice:</b> Come and join World Cruise Ambassador and singer Eleanor for a fun choir for all abilities and voices. All welcome	Silver Note (7)
4:00	<b>Enrichment Lecture with Sharon Giraud: "Diets of Heroes and Heroine"</b> - From the Vikings to the Gladiators, from Genghis Khan to Napoleon and all the great explorers- what sustained these heroes and heroines to accomplish great deeds over long distances?	Venetian Lounge (5)
4:00	<b>World Cruise Ambassador Concierge Desk</b> ( <i>next to Reception, until 4:45 p.m.</i> )	Dolce Vita (5)
4:00	<b>Bingo!</b> Join your Cruise Staff for this daytime activity	Dolce Vita (5)
4:15	Roman Catholic Mass with Father Stephen and Father Thomas. All are welcome	Silver Note (7)
4:45	<b>Team Trivia:</b> Join Cruise Director Moss for this daytime activity for fun and prize points	Dolce Vita (5)
5:30	<b>Golf Putting Competition:</b> Join your Cruise Staff for this daytime activity	Lobby (4)
5:30	Skincare with Sisley Cosmetics: . Visit the Boutique to discover Sisley's latest high-performance, anti-aging innovations	Boutique (8)
5:45	Pianist Remon and Guitar Entertainer Chayan alternate performances for guests' listening pleasure	Dolce Vita (5)

### EVENING ACTIVITIES

### DRESS CODE: ELEGANT CASUAL

6:00	Health Seminar: Pure Form Yoga with your Fitness Instructor ( <i>sign up required, Dial 600</i> )	Fitness Center (6)
6:00	<i>Silver Dawn</i> Trio plays for your listening pleasure	Panorama Lounge (9)
6:00	Solo Travelers get together with your Gentlemen Hosts Jay and Geoff	Panorama Lounge (9)
6:15	<b>Pre-Dinner Show! Silversea Proudly Presents: Headline Entertainer Analiza Ching in "Smoke on the Water"</b> Analiza returns with her dazzling performance and her phenomenal musical talent as a headline performer	Venetian Lounge (5)
6:45	Jazz Pianist Andre plays for guests' listening pleasure	Silver Note (7)
7:45	Join Silver Note Jazz Duo Andre and Esther as they entertain you with their live music	Silver Note (7)
9:00	Hit Triple 7s at the Silversea Casino—count it as a Blackjack win! Join us from 9:00 p.m. play to win today	Casino (7)
9:00	Pianist Remon and Guitar Entertainer Chayan alternate performances for guests' listening pleasure	Dolce Vita (5)
9:15	<b>Name That Tune:</b> Test your music knowledge in this classic guessing game followed by DJ Gabor	Panorama Lounge (9)
10:00	<b>Premier League: Liverpool vs Fulham</b> ( <i>satellite reception permitting</i> )	Sport 24 Extra Channel



# All Day Dining

## BREAKFAST

ATLANTIDE (DECK 4)

À la Carte 8:00 a.m. – 9:30 a.m.

LA TERRAZZA (DECK 7)

Buffet 7:30 a.m. – 10:00 a.m.

## LUNCH

ATLANTIDE (DECK 4)

À la Carte 12:00 p.m. – 1:30 p.m.

KAISEKI (DECK 4)

À la Carte 12:00 p.m. – 2:00 p.m.

LA TERRAZZA (DECK 7)

Buffet 12:00 p.m. – 2:00 p.m.

THE GRILL (DECK 10) \*

À la Carte 12:00 p.m. – 3:30 p.m.

## OPEN ALL DAY

ARTS CAFÉ (DECK 8)

Light Snacks 6:30 a.m. – 11:00 p.m.

SPACCANAPOLI (DECK 11)

À la Carte 11:00 a.m. – 11:00 p.m.

\* Weather permitting

\*\* Reservations required

## IN-SUITE DINING

24-hour

The menu is available on the TV.

To place your order please contact your butler or call extension 500. In-Suite Dining is also available in other public areas when our dining venues are not open for service.

\*Consuming raw or uncooked meats, poultry, seafood, shellfish or eggs may increase your risk of foodborne illness, especially if you have certain medical conditions. Silversea kitchens are not allergen free environments. Please inform our Crew if you have a food allergy or dietary restrictions.

## DINNER

*As a courtesy to your fellow guests please respect the times of your dinner reservation.*

ATLANTIDE (DECK 4)

À la Carte 6:00 p.m. – 8:30 p.m.

S.A.L.T. Kitchen (DECK 4)

À la Carte 6:30 p.m. – 9:00 p.m.

KAISEKI (DECK 4) \*\*

À la Carte 6:30 p.m. – 9:00 p.m.

A dining fee per person applies

LA TERRAZZA (DECK 7) \*\*

À la Carte 6:30 p.m. – 9:00 p.m.

SILVER NOTE (DECK 7) \*\*

À la Carte 6:30 p.m. – 9:00 p.m.

THE GRILL (DECK 10) \*/\*\*

À la Carte 6:30 p.m. – 9:00 p.m.

LA DAME (DECK 8) \*\*

À la Carte 6:30 p.m. – 9:00 p.m.

Gentlemen: Jacket required

A dining fee per person applies

*Should you wish to cancel a reservation at any of our specialty dining venues, kindly do so no later than 24 hours prior to your reservation time. Cancellations made after this period will incur the full cover charge per person.*

## BAR HOURS

6:30 a.m. – 11:00 p.m. Arts Café (Deck 8)

9:00 a.m. – 10:30 p.m. Pool Bar \* (Deck 10)

10:00 a.m. – until late Panorama Lounge (Deck 9)

10:00 a.m. – until late Dolce Vita (Deck 5)

6:00 p.m. – until late S.A.L.T. Bar (Deck 4)

6:00 p.m. – 11:00 p.m. Observation Lounge (Deck 11)

6:30 p.m. – until late Silver Note (Deck 7)

9:00 p.m. – until late Connoisseur's Corner (Deck 9)

\*Weather permitting

# SERVICES

## POOL & JACUZZI\* | DECK 10

7:00 a.m. – 7:00 p.m.

\* Weather permitting

## BOUTIQUE | DECK 8

Window gallery pop up boutique open all day for preview and viewing

10:00 a.m. – 10:00 p.m.

*Toiletries and other essential items are available for purchase upon request in the Boutique or through your Butler.*

*Dial 555 (Reception) for assistance.*

## CASINO | DECK 7

Slots: All day – until late

Tables: 2:00 p.m. – 6:00 p.m.

9:00 p.m. – until late

*Age restriction: over 18 to use the facilities.*

## OTIVM SPA | DECK 6

7:00 a.m. – 10:00 p.m.

## SAUNA & STEAM | DECK 6

7:00 a.m. – 10:00 p.m.

*Ages 16-17 permitted with guardian*

## FITNESS CENTER | DECK 6

5:00 a.m. – 10:00 p.m.

*Ages 16-17 permitted with guardian*

## FUTURE CRUISE SALES | DECK 5

Please dial 60515 or 80509 or consult your suite ITV to request an appointment.

8:00 a.m. – 12:00 p.m. | 2:00 p.m. – 6:00 p.m.

## SHORE CONCIERGE DESK | DECK 5

Dial 551 for assistance

during daily opening hours.

9:00 a.m. - 12:00 p.m. | 3:00 p.m. - 7:00 p.m.

## GUEST RELATIONS MANAGER | DECK 5

Dial 555 for assistance.

8:00 a.m. – 12:00 p.m. | 4:00 p.m. – 8:00 p.m.

## MEDICAL CENTER | DECK 3

Dial 10333 during clinic hours.

9:30 a.m. – 11:00 a.m. | 4:00 p.m. – 5:30 p.m.

Medical assistance is also available by appointment.

Dial 555 (Reception) after hours.

*Emergency service is available 24 hours a day.*

*Please use the Forward elevator or Forward stairs to reach the clinic.*

Kindly ask about charges prior to consultation.

## RESERVING DECK CHAIRS

Kindly note that deck chairs cannot be reserved. If leaving for long periods, take your belongings so others may use the chairs. Items left unattended for about an hour will be removed and sent to Reception (Lost & Found). For assistance, contact the pool bartender. Thank you for your cooperation in this matter.

**IN THE EVENT OF AN  
EMERGENCY PLEASE DIAL 999**